

## [RockBox] Firmware Recovery.

**Step 1 :** Install the Driver and Android Tool to PC:

- [http://files.syabas.com/popcornhour/rockbox-basic/tools/DriverAssitant\\_v4.5.zip](http://files.syabas.com/popcornhour/rockbox-basic/tools/DriverAssitant_v4.5.zip)
- [http://files.syabas.com/popcornhour/rockbox-basic/tools/AndroidTool\\_Release\\_v2.38.zip](http://files.syabas.com/popcornhour/rockbox-basic/tools/AndroidTool_Release_v2.38.zip)

**Step 2 :** Download the latest firmware and unzipping the archieve:

- [https://www.cloudmedia.com/?page\\_id=3705](https://www.cloudmedia.com/?page_id=3705)

**Step 3 :** Connect the RockBox to TV through the HDMI output



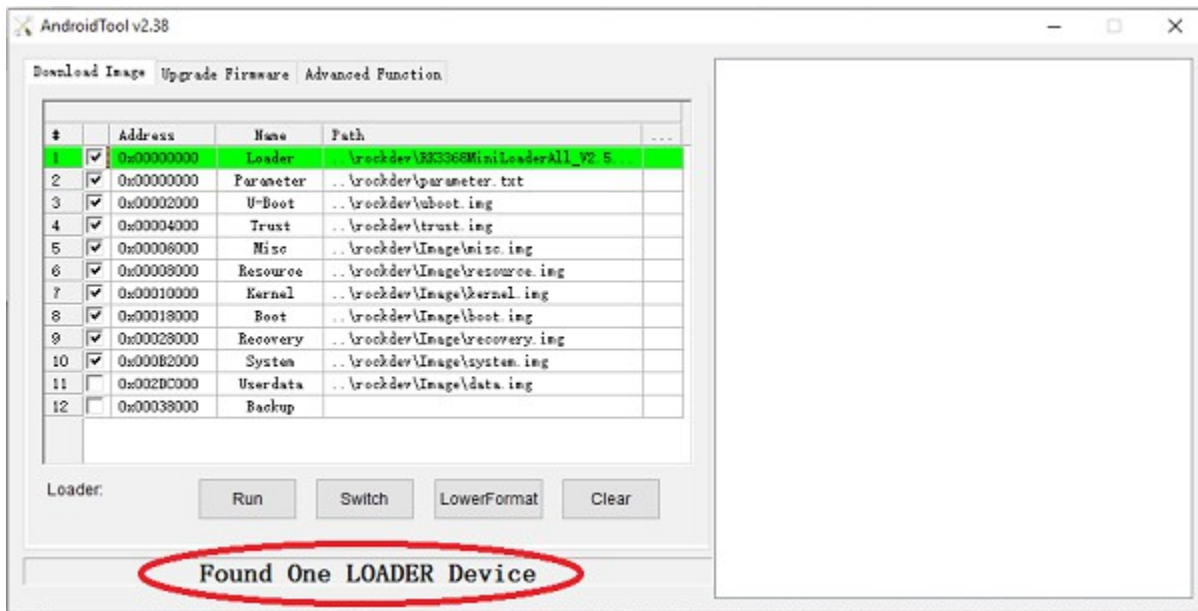
**Step 4 :** Take a pin and poke on the hole behind the board, and at the same time power on the RockBox



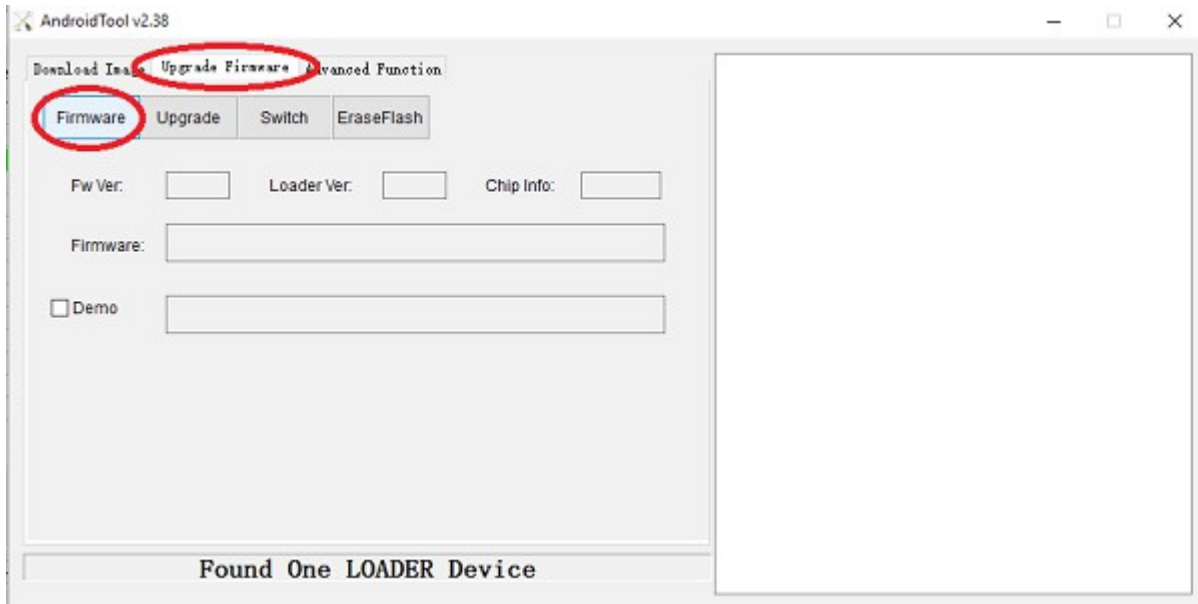
**Step 5 :** Connect USB Data Cable Male to Male from RockBox to PC



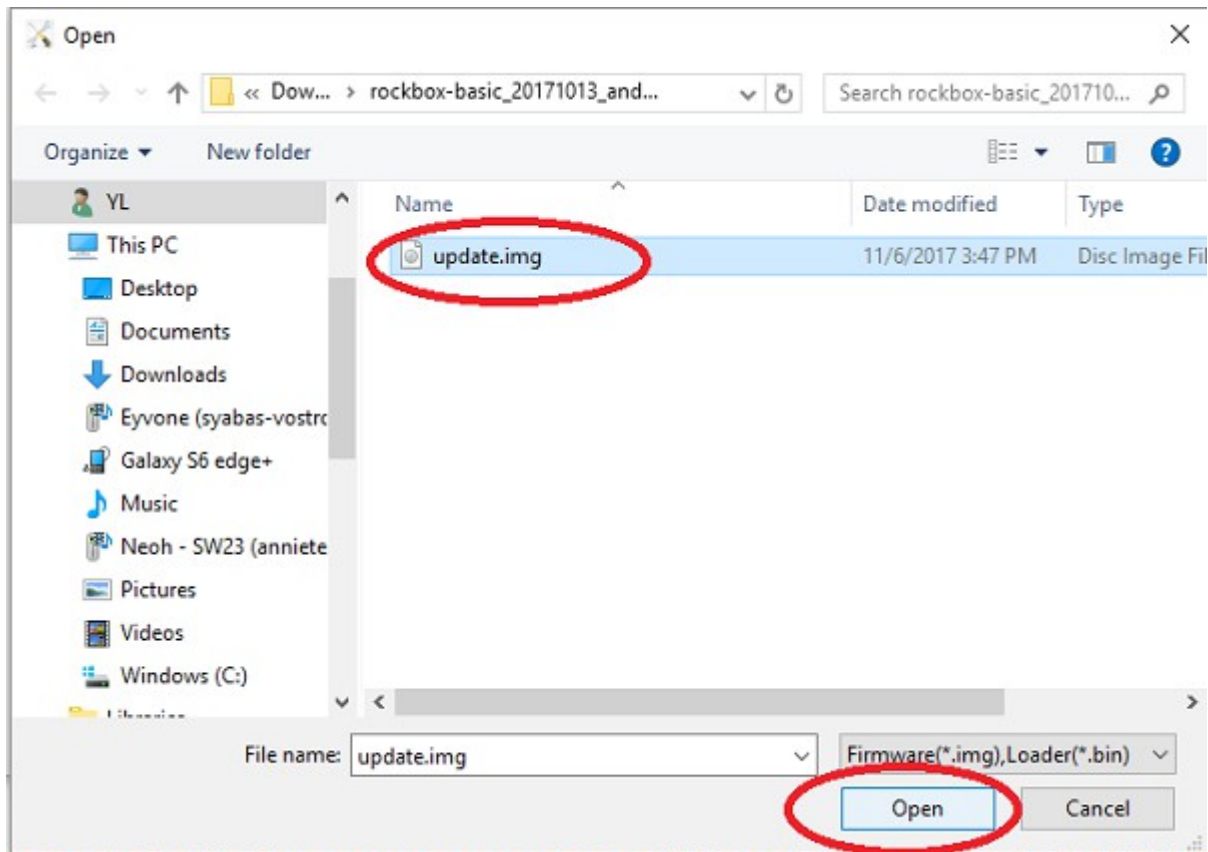
**Step 6 :** Open Android Tool v2.38, it will detect the RockBox and show "Found one LOADER Device" under Downloading Image Tab



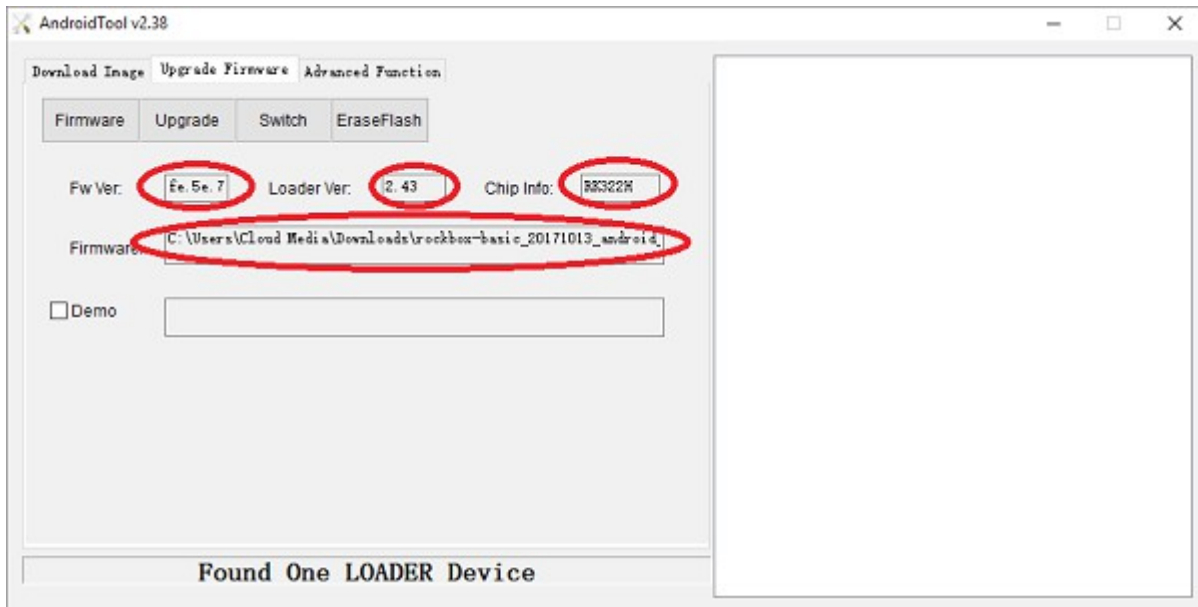
**Step 7 :** Select the Upgrade Firmware Tab and Select Firmware button



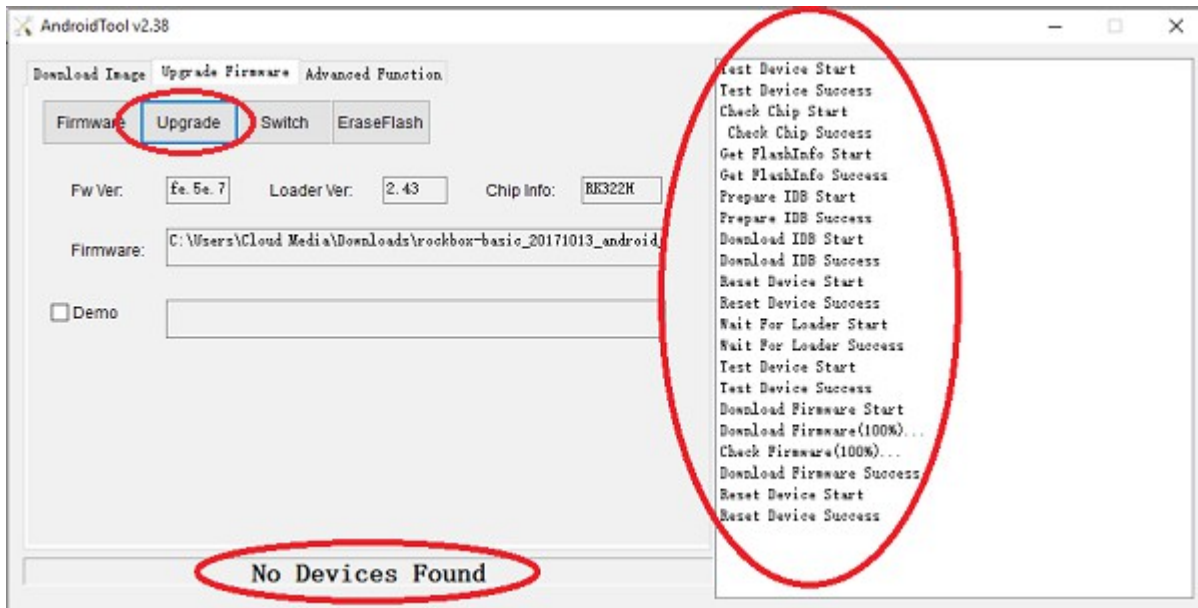
**Step 8 :** Select the IMG file, then Select Open



**Step 9 :** After firmware uploaded, It will show the Fw Ver / Loader Ver / Chip info and firmware path automatically.



**Step 10 :** Select Upgrade button to start firmware update. you may check the status from the right panel. Note: After firmware update completed, it will show "No devices found" from Android Tool



**Step 11 :** From TV screen able to show "Erasing.." followed by android boot up logo then access to home screen.. Note: it will take approximately 2-3minutes to access to home screen.

