



"Store Front" Digital Signage Quick Start Guide

Hardware Components/Extension

- Internal USB drive port
- External USB drive port
- Power Indicator LED
- IR jack
- RS232 port
- Audio jack
- Video Graphics Array port (VGA)
- Reset button
- High-Definition Multimedia Interface (HDMI)
- Ethernet port
- Power input

Set up Digital Signage

- Open the Digital Signage top panel to confirm that the internal USB thumbdrive is securely attached.
- Attached the IR cable to IR jack.
- Power on the Digital Signage.
- Demo playback.



Figure 1.0 "Store Front" Digital Signage Main screen.

TV Interface

- Media Source
 - ◇ Shows the Digital Signage Flash Drive (the internal USB drive)
- Web Services
- Setup Page
 - ◇ Home - Return to the Homepage or Media Source page.
 - ◇ Preferences - Setting for Language, Video Zoom and RC Key Repeat.
 - ◇ Audio/Video - Setting Video Output resolution, HDMI Audio and Surround Mode.
 - ◇ Network - Display MAC Address and IP Address.
 - ◇ Network Share - Browse and add network shares (smb/nfs)
 - ◇ Maintenance - Display Firmware Version information.

Select TV Mode

- Go to **Setup**, then the Audio/Video section
- AUTO
- HDMI
 - ◇ 480p 60Hz
 - ◇ 576p 50Hz
 - ◇ 720p 60Hz^
 - ◇ 720p 50Hz
 - ◇ 1080i 60Hz
 - ◇ 1080i 59Hz
 - ◇ 1080i 50Hz
 - ◇ 1080p 60Hz*
 - ◇ 1080p 50Hz*
 - ◇ 1080p 23.976Hz*
 - ◇ 1080p 24Hz*
 - ◇ 1080p 25Hz*
 - ◇ 1080p 29.97Hz*
 - ◇ 1080p 30Hz*
 - ◇ 1080p 59.9Hz*
 - ◇ 1280x768 60Hz
 - ◇ 1360x768 60Hz
 - ◇ 1366x768 60Hz
 - ◇ 1440x900 60Hz
 - ◇ 1680x1050 60Hz
- VGA
 - ◇ 1280x768 60Hz
 - ◇ 1360x768 60Hz
 - ◇ 1366x768 60Hz
 - ◇ 1440x900 60Hz
 - ◇ 1680x1050 60Hz



NOTE: ^Default Resolution. Can be reverted to with the remote control key combination:
"TV MODE" + "7"

** Limited 1080p compatibility is available depending on the connected HDTV.*

PC Application

- ◇ Download management software from
<http://www.popcornhour.com/download/signage/signage.html>
- OR
- Install from supplied Installation CD.
- ◇ Install to administration PC.
- ◇ Run the application once installation has been completed.

Project

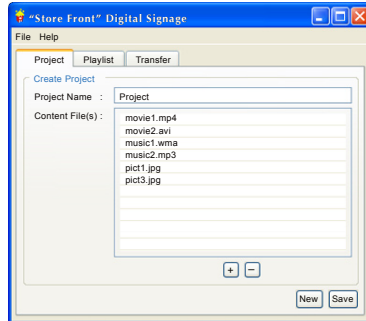


Figure 2.0 Project screen.

1. Enter the project name.
2. Press the **[+]** button to add media files to the Content Files(s) listing.
3. Press the **[-]** button to remove media files from the Content Files(s) listing.
4. Press the **[Save]** button to save the current project.

Playlist

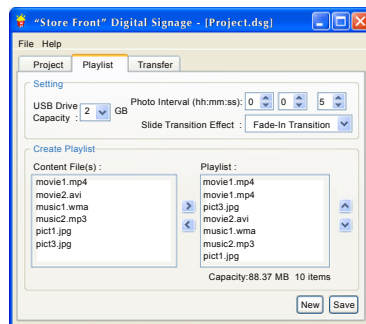


Figure 3.0 Playlist screen.

1. Select a **USB Drive Capacity** (matching the Digital Signage internal storage size)
2. Select a **Photo Interval** period.
3. Select a **Slide Transition Effect** for photo playback.
4. Press the **[>]** button to add the selected media file to the Playlist.
5. Press the **[<]** button to remove the selected media file from the Playlist.
6. Press the **[^]** and **[v]** buttons to change the playback sequence. (Top first)
7. Press the **[Save]** button to save the current playlist.

Transfer

◇ FTP to Digital Signage

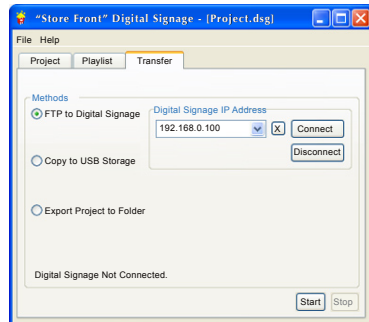


Figure 4.0 IP Address screen.

1. Enter the **IP Address** of the Digital Signage Player.
2. Press the **[Connect]** button to connect to the Digital Signage Player.
3. Press the **[Start]** button to start the FTP transfer of project files and playlist.
4. Wait for the FTP transfer to complete.

◇ Copy to USB Storage

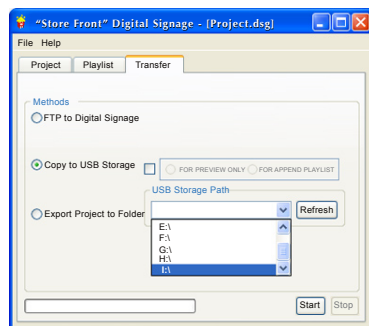


Figure 5.0 Copy to USB Storage screen.

1. Plug in a USB drive to the PC.
2. Press the **[Refresh]** button to refresh the drive listing.
3. Select a USB Storage Path.
4. Press the **[Start]** button to initiate the copy process.
5. Wait for the copy process to complete.
6. Eject the USB drive.
7. Plug the USB drive into the Digital Signage Player's external USB port.

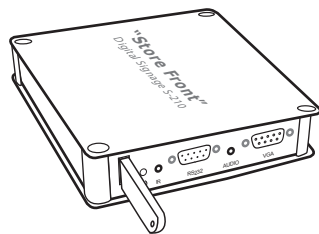


Figure 6.0 Plug the USB drive into the Digital Signage Player.

8. The contents of the USB drive will be copied to the Digital Signage Player's internal storage.
9. The Digital Signage Player will display a on screen prompt when the content has been copied and the USB drive is safe for removal.
10. The uploaded project will begin playback immediately after removal of external USB drive.

◇ Export Project to Folder

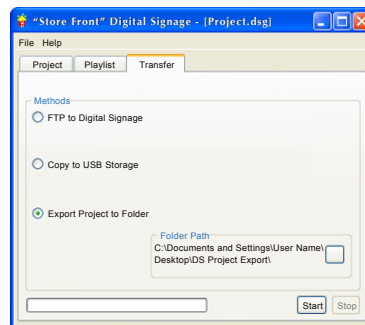


Figure 7.0 Export Project to Folder screen.

1. Press the [...] button select a folder as export destination.
2. Press **[Start]** button.
3. Wait for the Export process done.

 **NOTES:**

- Create Project
 - ◇ Files over 4GB in size will not be added.
- FTP to Digital Signage
 - ◇ The default FTP login
 - Username = ftpuser**
 - Password = ftpuser**
 - ◇ Non ISO-8859 (e.g. Chinese/Japanese) filenames are not supported for FTP transfer.
- If the Digital Signage Player's internal storage is empty or freshly formatted, please use the "**Copy to USB Storage**" transfer method mentioned above to initialize the internal storage.