

 Networked Media Tank



User's Guide

A-110

1.0 Safety

1.1 For Your Safety	08
---------------------------	----

2.0 Product Overview

2.1 Package Contents	09
2.2 Introduction	10
2.3 Features	11
2.4 Minimum System Requirements	12
2.5 Hardware Overview	13
2.5.1 Front Panel	13
2.5.2 Back Panel	14
2.6 Remote Control	16
2.6.1 Remote Control Overview	16
2.7 Installation	19
2.7.1 Video Connections	19
2.7.2 Audio Connections	21
2.7.3 Network Connections	22

3.0 Quick Start

3.1 Media Filters	23
3.2 Viewing a Video	25
3.3 Basic Remote Control Buttons	28
3.4 Basic Video Setup	29
3.5 Basic Audio Controls	31

4.0 Media Sharing

4.1 Installing Media Servers on your PC	32
4.1.1 myiHome	32
4.1.2 UPnP AV or DLNA Server	33
4.1.3 Windows Media Player Network Sharing Service (WMP-NSS)	34
4.1.4 Third-Party HTML-based Servers	35
4.2 Setting up Network Shares on your NMT	36
4.2.1 Samba Share Setup	36
4.2.2 NFS (Network File System) Shares Setup	37

4.3	Accessing your Network Shares on the NMT	38
4.3.1	Browsing Network Shares	38
4.3.2	Permanent Network Shares	39

5.0 NMT Applications Installation

5.1	Hard Disk Drive (HDD) Installation	41
5.2	NMT Applications Installation	43
5.3	Using the USB Slave Drive Function	45

6.0 Using your Popcorn Hour A-110 NMT

6.1	Remote Control Functions	50
6.2	Media Source	57
6.3	Web Services	58
6.3.1	Media Service Portal	59

6.3.2	MSP Community	60
6.3.3	Torrent	61
6.3.4	SayaTV	62
6.4	Setup	63
6.4.1	Preferences	64
6.4.2	Audio/Video	65
6.4.3	Network	69
6.4.4	Network Share	70
6.4.5	NMT Applications	71
6.4.6	DVD/Audio CD	73
6.4.7	Maintenance	74
6.4.8	Firmware and NMT Applications Update	75






7.0 Configuring the NMT Applications

7.1	NAS (Network-Attached Storage) Functions	81
7.1.1	FTP Server	81

7.1.2	SMB Server	82
7.1.3	NFS Shares (Network File System)	83
7.1.4	Syabas CE-HTML Server (myiHome)	84
7.2	Torrent Setup	85
7.3	Usenet Client Setup: NZBGet	88
7.3.1	Setting up the NZBGet on the NMT	89
7.3.2	Usenet: Working with NZBGet	91
7.3.3	Downloading	93
8.0	Troubleshooting	
8.1	Frequently Asked Questions (FAQs)	95
8.2	Technical Support Contact Information	101
9.0	Product Specifications	
9.1	Physical	102
9.2	Electrical	103

9.3	Chipset and Memory	103
9.4	Ports and Connectors	104
9.5	Audio/Video Output	105
9.6	Supported Audio/Video Formats	106
9.7	Web Services	110
9.8	Connectivity	112

1.1 For Your Safety

Message	Description
 Tip	This is a useful tip in using the product
 Reminder	This is a reminder in using the product
 Note	This is a non-critical notice to the user
 Caution	Failure to take or avoid a specific action could result in damage to the product or loss of data
 Warning	Failure to take or avoid a specific action could result in injury

2.2 Introduction

Congratulations on your purchase of an award winning product that will enhance your home multimedia experience.

The Popcorn Hour A-110 Networked Media Tank (NMT) allows you to stream digital video, audio and photos from various sources for your enjoyment on your HDTV or Home Theater setup. You can stream or playback your digital media content from a variety of sources, such as your PC, Network Attached Storage (NAS), digital camera, USB mass storage devices (Flash drive, HDD, DVD drive), internal SATA HDD and even directly from the Internet via the Media Service Portal.

Your NMT also serves as an NAS, supports Usenet downloading, and is also a BitTorrent peer-to-peer downloader to eliminate the need to switch on a PC or other devices for this purpose.

Feel free to browse through this user guide to know your NMT better and we hope that you, your family and friends have a great time with this amazing product.



Tip: To start using your NMT immediately, skip to **Chapter 3** for the **Quick Start**.

2.3 Features

The Popcorn Hour A-110 NMT is an enhanced version of the popular A-100 NMT model. It adds support for 2.5"/3.5" SATA HDD and USB Slave functionality to improve connectivity and transfer rates. The HDMI interface has been updated to the 1.3a specifications, allowing full support of HD Audio pass-through for DTS HD-HR, DTS HD-MA, Dolby Digital Plus and Dolby TrueHD. The ports on the A-110 have also been relocated, with a USB port moved to the rear panel, an optical S/PDIF port to replace the co-axial S/PDIF port, and a hardware reset button for easy use of the device.

The Popcorn Hour A-110 supports the latest high bitrate video formats (MPEG2 MP@HL, H.264 HP @L4.1, VC-1 AP@L3 in TS of at least 40Mbps) to give you up to 1080p high-definition videos.

In line with the advances in Internet TV, the A-110 supports peer-to-peer Internet TV streaming technology from SayaTV, as well as popular unicast Internet TV such as YouTube, Revision 3 and Vuze via the Media Service Portal.

The A-110 firmware is upgradeable to support future media containers, codecs and features.

For detailed specifications of your NMT and supported audio/video formats, refer to

Chapter 9: Product Specifications.

2.4 Minimum System Requirements

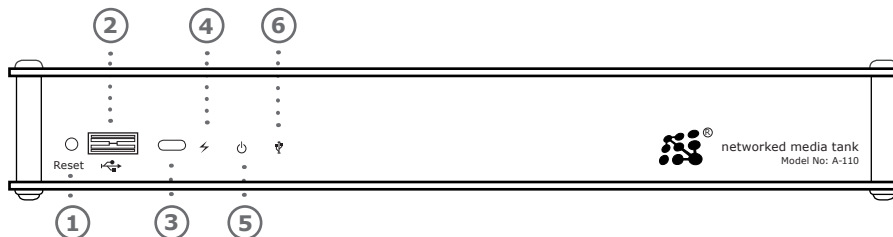
- High-Definition (HD) or standard television (TV) with HDMI, S-Video, Component Video, or Composite Video input
- TV, Stereo, or HD Audio receiver with Optical Digital, Coaxial Digital, or Composite Audio input
- Wired or wireless network (wired 100Mbps or better network is recommended for networked video streaming)
- Connection to the Internet (for use with **Web Services**)

Listed below are the minimum requirements for installation of the **myiHome Media Server** software application on your PC.

- Pentium 233(MHz) or higher processor (Pentium III or higher recommended)
- Microsoft Windows® 2000, XP, Vista (32 or 64-bit); Mac OS X or Linux operating systems
- 512MB of RAM
- 100MB of available hard disk drive (HDD) space

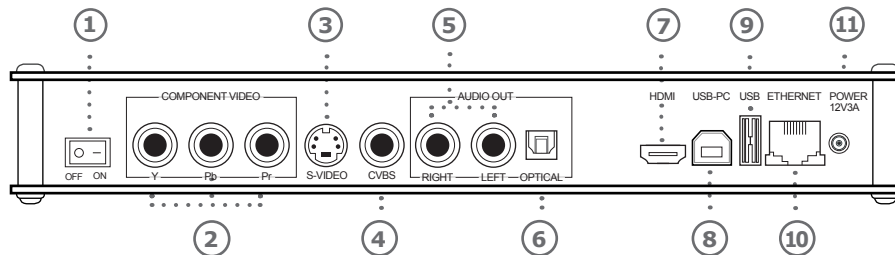
2.5 Hardware Overview

2.5.1 Front Panel



- | | | |
|--|---|--|
| <p>1 Reset Button
Press to reset your NMT.</p> | <p>3 IR (Infrared) Receiver
The IR receiver receives signals from the remote control.
Avoid blocking the IR receiver as the remote control needs a direct line of sight to the IR receiver for proper function.</p> | <p>5 Power Indicator
Displays an AMBER indicator when your NMT has been turned ON and while it is operating.</p> |
| <p>2 USB Port
Connect a USB storage device to this port to access its media content.</p> | <p>4 Standby Indicator
Displays a RED indicator when your NMT is on Standby mode.</p> | <p>6 USB (Slave) Indicator
Displays a GREEN indicator when your NMT is being used as a USB slave drive.</p> |

2.5.2 Back Panel



- 1** **Power ON/OFF Switch**
Use this switch to turn on or turn off your NMT.

- 2** **Component Video Connectors**
Use these connectors to connect your NMT to your TV set using component video connectors. The connectors are usually green, blue, and red in color. (Video only)

- 3** **S-Video Connector**
Use this to connect your NMT to your TV using the S-Video connector. (Video only)

- 4** **CVBS (Composite Video) Connector**
Use this connector to connect your NMT to your TV using the yellow Composite Video connector. The Composite Video cable usually comes attached to Composite Audio connectors (red and white connectors). (Video only)

- 5** **Composite Audio Connectors**
Use these connectors to connect your NMT to your TV using the red and white Composite Audio connectors. These connectors usually come attached with the Composite Video connector (yellow connector). (Audio only)

- 6** **S/PDIF Optical Digital Audio Connector**
Use this connector to connect your NMT to your home audio system using the S/PDIF audio connector. (Audio only)

7 **HDMI (High-Definition Multimedia Interface) Connector**

Use this to connect your HD TV (High Definition TV).
(Video and Audio)

8 **USB Slave Connector**

Connect your NMT to your PC using the supplied USB cable to enable your NMT to function as a slave drive for your PC.

9 **USB Port**

Connect a USB storage device to this port to access its media content.

10 **Ethernet (RJ-45) Port**

Connect an Ethernet cable (RJ-45) to the Ethernet port and attach the other end to a router or hub on your LAN (Local Area Network).

11 **Power Supply Port**

Connect the supplied power adapter to the Power Supply port in order to power your NMT.

**RETURN**

Returns to the previous menu screen.

**SOURCE**

Returns to the Media Source screen.

**INFO**

Displays the timeline bar during media file playback. Press again to display the media file information such as the title, format, and so on.

**ENTER**

Selects the currently highlighted selection or plays the highlighted media file. (single file playback only)

**Directional Keypad (D-Pad)**

Allows you to navigate and highlight options or media files.

**HOME**

Returns to the Media Filters menu screen of your currently selected Media Source.

**MENU**

Jumps to the DVD Menu screen during DVD playback.

**PREV**

Skips backward to the previous file/track.

**PLAY**

Plays the selected file/track and continues to the next file/track on the list.

**NEXT**

Skips forward to the next file/track.

**TITLE**

Opens the text input box for URL input while in a menu screen.

**REV**

Rewinds the current media playback.

**STOP**

Stops playback and returns to the menu screen.

**FWD**

Fast-forwards through the current media playback, continue pressing to toggle 2x, 4x and 8x fast-forwarding.

**REPEAT**

Repeat the current selected media file.

**ANGLE**

Switches the camera or viewing angle during playback. (only applicable for supported multiangle playback formats)

**PAUSE**

Pauses the current media playback.

**SLOW**

Slows down the playback of the current media playback.



TIME SEEK

Allows you to time-seek the current selected media for a jump to a particular playback time; hour:minute:second = 00:00:00 (use numeric buttons to input the desired playback time)



AUDIO

Toggles between the available audio modes.



SUBTITLE

Turns ON the subtitles and toggles through its options.
(if available with your video playback)



ZOOM

Toggles between available viewing options. See **Remote Control Functions** for more information



RED BUTTON

Jumps to the **Video** media filter.



GREEN BUTTON

Jumps to the **Music** media filter.



YELLOW BUTTON

Jumps to the **Photos** media filter.



BLUE BUTTON

Jumps to the **Others** media filter.



Reminder: Replace the batteries with two new AAA batteries if the remote control is slow to respond or does not respond at all.

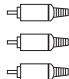


Tip: For the comprehensive guide to your NMT remote control, see **Remote Control Functions**.

2.7 Installation


2.7.1 Video Connections

To connect your NMT to your television (TV) for video output, use one of the following options available on your NMT. All the video connectors are located at the rear panel of your NMT.

Component Video	
	Attach the COMPONENT video cable to the COMPONENT connectors of your NMT by matching the color coded connectors and ensure that the same is done for the opposite end into your TV input.



Note: This cable is not supplied with your NMT.

S-Video	
	Attach the S-VIDEO cable to the S-VIDEO connector of your NMT and ensure that the same is done for the opposite end to your TV input.



Note: This cable is not supplied with your NMT.

Composite Video



Attach the yellow COMPOSITE video cable to the COMPOSITE connector of your NMT and ensure that the same is done for the opposite end to your TV input.



Note: This cable is not supplied with your NMT.

HDMI



Attach the supplied HDMI cable to the HDMI connector of your NMT and ensure that the same is done for the opposite end to your TV input.

HDMI provides the best interface for your NMT and your High Definition TV as it is able to support a video mode of up to 1080p, with audio output as well.

2.7.2 Audio Connections

To connect your NMT to your TV or audio system for audio output, use one of the following options available on your NMT.



Note: The HDMI cable also carries your audio output on the same cable, thus a separate audio connection from your NMT to your TV is not required.

Composite Audio



Attach the COMPOSITE audio cable to the red and white COMPOSITE connectors of your NMT and ensure that the same is done for the opposite end to your TV input.



Note: This cable is not supplied with your NMT.

Optical Digital Audio



Attach the optical audio connector into the OPTICAL connector on your NMT and ensure that the same is done for the opposite end to the audio input of your audio system.



Note: This cable is not supplied with your NMT.

2.7.3 Network Connections

Your NMT allows you to connect the unit to your network to expand its functionality and enhance your multimedia experience. Use one of the following connections to connect your NMT to your network.

LAN (RJ-45 Ethernet)



Attach the LAN connector to the ETHERNET connector at the rear of your NMT and connect the opposite end of the LAN cable to a router on your network.

The LAN (RJ-45 Ethernet) cable connection is the recommended connection method as it allows faster access to and from your NMT.

For more information about the Ethernet functions on your NMT, refer to **Chapter 7.1: Network**.

Wireless Adapter



The WN-100 802.11n (draft 2.0) USB Wi-Fi adapter adds out-of-the-box wireless access capability to your Popcorn Hour A-110 NMT.

For further information on setting up your WN-100 USB Wi-Fi adapter, refer to the user guide supplied with the wireless adapter unit.



Note: The wireless adapter is not supplied with your NMT.

03 Quick Start

// Popcorn Hour A-110

This Quick Start chapter will guide you on how to set up your Popcorn Hour A-110 NMT to play your first video on your TV.

Movies, videos, music, photos, and other media stored on external storage devices such as flash memory drives or external hard disk drives (HDD) can be easily connected to your NMT via the available USB interface and played back on your TV.

3.1 Media Filters

To ease the selection of media files on your NMT, Media Filters will assist you by filtering the media content according to their media type. The NMT Media Filters are divided into four filter categories.



Video Media Filter

This filter will only display files with video formats such as *.avi*, *.mpg*, *.mkv*, *.m2ts*, and other supported video formats.

Remote control key:  button



Music Media Filter

This filter will only display files with audio formats such as *.mp3*, *.flac*, *.ogg*, *.m3u*, and other supported audio formats



Remote control key:  button



Photo Media Filter

This filter will only display files with image formats such as *.jpg*, *.png*, *.gif*, *.bmp*, and other supported image formats.

Remote control key:  button



Others Media Filter

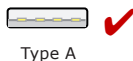
This filter will only display files with formats such as *.html*, *.pls*, and other supported formats.

Remote control key:  button

For more information on other formats supported by the Media Filters, see ***Chapter 9.6: Supported Audio/Video Formats.***

3.2 Viewing a Video

Once the power supply and the appropriate cables have been connected to your NMT and TV, connect your USB external storage device to your NMT using the USB port (available on the front and rear of your NMT).



Type A



Note: Connect your USB external storage devices to your Popcorn Hour using the Type A connector available at the front and rear panel of your Popcorn Hour.



Type B

Do NOT use the USB Type B interface as it is only used for the USB Slave drive function. Refer to the diagram below to identify the types of USB interface available.

Follow the steps below to play a video:

1. Power **ON** your NMT (may take up to 2 minutes). The loading screen may flicker as the unit configures its video output to suit your TV.

2. Once the loading has been completed and the Media Source screen appears, use the remote control to select the USB external storage device that you have connected to the unit, as shown below.













3. Press **ENTER** to confirm your selection. Your external storage device is now selected for use by your NMT.
4. Select the Video media filter, browse to the location of your video file using the directional keypad and **ENTER** button on your remote control.

5. Highlight the desired video file. Press **PLAY** or **ENTER** to start the playback of the video file.
The video playback on your NMT should begin.
6. Press the **STOP** button to end the video playback.
7. To play any other compatible media file, select the proper media filter, and repeat the steps above.

3.3 Basic Remote Control Buttons

Here are some basic remote control buttons and their functions.

Playback controls			
	PREV Plays the previous file in the media list		PLAY Plays the current selection and the other files in the media list
	NEXT Plays the next file in the media list		REV Rewinds the current active playback file
	STOP Stops the current active playback file		FWD Forwards the current active playback file
	REPEAT Repeats the current active playback file		PAUSE Pauses the current active playback file
	SLOW Reduces the playback speed		TIME SEEK Allows you to skip to an exact playback time

For a comprehensive list of the remote control functions, refer to ***Remote Control Functions***.

3.4 Basic Video Setup

The video output resolution can be customized to fit your TV properly. To identify the best viewing resolution for your TV, refer to the user guide supplied with your TV.

To select the best video output resolution for your TV, follow the steps below.

1. At any menu screen, press **Setup** on your remote control.
2. At the Setup Screen, select the **Audio/Video** option to access the display options screen.
3. Select the **Video Output** option to choose a video output resolution for your TV.
4. Press **ENTER** to confirm your selection and save your selection by selecting **SAVE** (the **SAVE** button is located at bottom-right side of the Audio/Video menu).

Below is a list of some common output resolutions and their quick-access remote control buttons:

Remote Control quick-access button	Video resolution
TV Mode -> 0	Auto (default)
TV Mode -> 1	Component/Composite NTSC 480i
TV Mode -> 2	Component/Composite PAL 576i
TV Mode -> 4	Component 720p60
TV Mode -> 5	Component 1080i60
TV Mode -> 6	Component 1080p60
TV Mode -> 7	HDMI/Component 720p60
TV Mode -> 8	HDMI/Component 1080i60
TV Mode -> 9	HDMI/Component 1080p60





Note: To use the quick-access buttons, press and release the **TV Mode** button, followed by pressing and releasing the corresponding numeric button.

For example, to get the output of HDMI 1080i60, press and release **TV Mode**, followed by pressing and releasing the numeric **8** button on the remote control.

For further information regarding the Video Setup of your NMT, see **Chapter 6.4.2.1: Video Mode Options.**

3.5 Basic Audio Controls

The audio volume output of your NMT can be controlled using the **Page Up**  and **Page Down**  buttons on the remote control during playback.

For the most natural sound output from your NMT, leave the volume at **0** (no signal boost). For volume control, increase or decrease the volume of your audio system to obtain a comfortable audio volume output.



Caution: Boosting the output volume of your NMT may cause audio distortion.

4.1 Installing Media Servers on your PC

4.1.1 myiHome

When it comes to digital content, there is always the hassle of organizing and presenting your content for playback. Showcasing your digital content is made simpler by having an organized media library.

The fundamental concept behind the myiHome Media Server has always been an easy to use, simple to navigate and quick to access method to showcase your contents.

myiHome is updated automatically when it detects new content. It also allows transcoding, which means that if the NMT does not support the reproduction of some form of native multimedia file for lack of proper codec, myiHome transcodes it on the computer to reproduce such content via network streaming. This way, you do not have to re-encode the file to another compatible format for use on the NMT.

To set up myiHome on your PC, follow the steps below.

1. Download the latest version of myiHome from:

<http://www.popcornhour.com/download/myihome/myihome.html>

2. Once the download is complete, launch the installation program.
3. Follow the onscreen instructions to install the myiHome program.
4. Once the installation is complete, launch the program and follow the onscreen instructions to set up the myiHome program.

4.1.2 UPnP AV Server

Your NMT will automatically detect all available UPnP AV compliant content servers on starting up and will list them on the Media Source screen. No additional setup is required on the unit itself.

It is possible to access attached USB storage devices remotely using your NMT. Browse to **Setup > Network Share** on your NMT to see the USB storage devices attached to your PC.

The attached USB storage devices must be formatted with Ext2 / Ext3 or FAT16 / FAT32 in order to be compatible with your NMT. This will enable you to upload, change or execute files (NTFS and HFS formatted drives are read-only).



Note: FAT16 and FAT32 formats have a file size limitation at 4 GB, which may pose a problem for large media files such as a DVD ISO with minimal compression.

Some servers may require additional authorization configuration on the server-side, such as the Windows Media Player Network Sharing Service (WMP-NSS) described below.

4.1.3 Windows Media Player Network Sharing Service (WMP-NSS)

WMP-NSS allows you to playback your PC's media files using your NMT when both units are connected to your home LAN network.

To enable WMP-NSS playback on your NMT, the NMT has to be authorized using the WMPNSS application on your PC. Follow the steps below to set up the WMP-NSS.

1. Ensure that both your PC and NMT are connected to your LAN and switched on.
2. On your PC, launch the WMPNSS application, select the following menu options:

Options > Library > Configure Sharing

3. Select the checkbox next to the **Share my media to** menu item. You should now have a list of detected devices to choose from on the menu (right-clicking a selected device listed on it will show you a list of options).

4. Select Properties to view details about each device. Find the device that matches the MAC address of your NMT and select **Allow** in the menu item for that device.



Note: To identify the MAC address of your NMT on the network, refer to **Setup > Network** on your NMT. The MAC address will be listed under Ethernet Configuration.

4.1.4 Third-Party HTML-based Servers

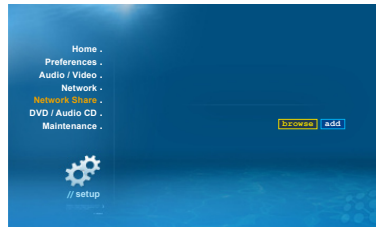
Your NMT supports HTML-based media stream extensions. User-developed media streaming servers are compatible with your NMT and you will be able to access media content from these streaming servers over the internet.

These open-source third-party streaming servers are available at:

WizD for NMT	http://jhue.users.sonic.net/
SwissCenter	http://swisscenter.co.uk
Llink	http://www.lundman.net/wiki/index.php/Llink
GB-PVR	http://jhue.users.sonic.net/

4.2 Setting up Network Shares on your NMT

A network share allows the NMT to stream media stored on external devices that are connected to the same network. Currently, the NMT supports network shares through Samba (SMB), File Transfer Protocol (FTP), and Network File System (NFS).



4.2.1 Samba Share Setup

To set up your NMT for Samba Sharing, navigate to **Setup > Network Share**. You can browse your network and add the path to the list, or manually input the path to your SMB share by selecting the **add** button:

smb://<hostname or ipaddr>/foldername

4.2.2 NFS (Network File System) Shares Setup

To set up your NMT for NFS sharing, navigate to **Setup > Network Share**, and type in the full path to your NFS share, as shown below.

smb://<hostname or ipaddr>/foldername (colon after hostname is required)

With firmware 01-15-080330-14-POP-402 or newer you can select the protocol (TCP or UDP) used for the NFS connection:

nfs:// (UDP)

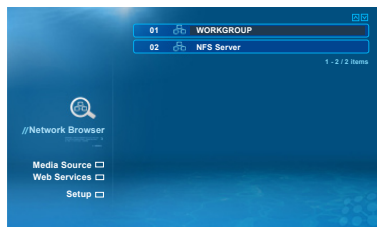
nfs-tcp:// (TCP)

Some firewalls, including the Microsoft® Windows XP firewall will block critical parts of UDP NFS server connections, even if correctly configured. If you experience a **No content found** error when using UDP, try switching to the TCP mode.

Some gigabit switches have problems with UDP, thus preventing data streaming (viewing files may appear to be unaffected). If you encounter this problem, try switching to the TCP mode.

4.3 Accessing your Network Shares on the NMT

4.3.1 Browsing Network Shares



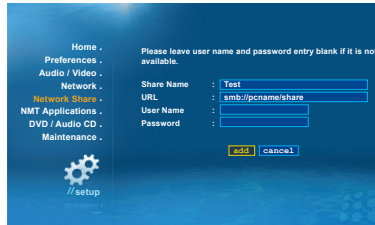
To browse your connected Network Shares, go to **Media Source > Network Browser** and select WORKGROUP to see the available Network Shares on your network.

Various shared media servers on your network and Permanent Network Shares may also appear on the Media Source screen for easy selection.



Note: Ensure that your NMT is connected to your network properly and the desired media servers or folders have been configured to allow sharing before browsing for Network Shares.

4.3.2 Permanent Network Shares



To ease the search of specific Network Shares on your network, you may bookmark them on your NMT. Follow the steps below to add Permanent Network Shares to your NMT.

1. Go to **Setup > Network Share** and select the **add** button.
2. Enter the information into each category according to the type of Network Share that you want to add:
 - **Share Name** – Enter a name for your Permanent Network Share. The name will be displayed on the Media Source screen if the Permanent Network Share is **active**.

- **URL** – Enter the path of the Permanent Network Share. Refer to Section 4.2 to obtain the correct paths according to the type of Network Share.
- **User Name** – Enter the login username of the Network Share that you want to access (if required).
- **Password** – Enter the login password of the Network Share that you want to access (if required).



Note: Network Shares are mounted and **active** after it has been selected in the Media Source or Network Browser screens. Only one Permanent Network Share can be **active** at a time.

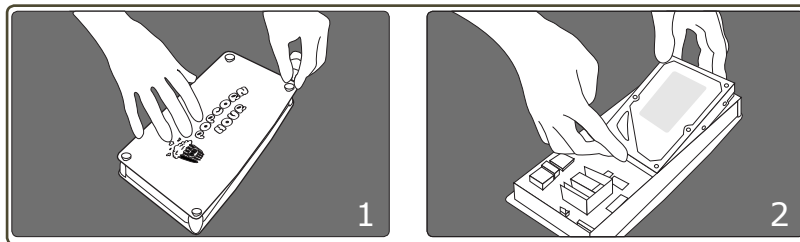
Your NMT allows you to install an internal hard disk drive (HDD) to expand its capabilities. A HDD is required for installation of media applications on your NMT.



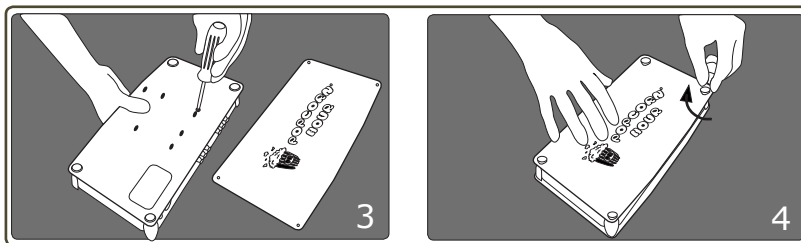
Note: If you do not wish to use the NMT Applications on your Popcorn Hour A-110 NMT, you may skip this chapter.

Refer to the **Hard Disk Drive (HDD) Installation** below to install a HDD into your NMT.

5.1 Hard Disk Drive (HDD) Installation



Warning: Ensure that the power supply cable has been disconnected from your NMT before attempting to dismantle the unit.



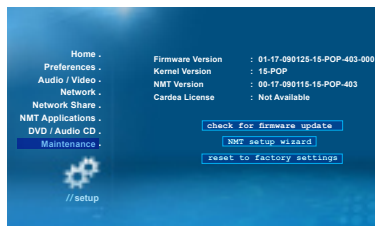
1. First, unscrew the four screws on the top panel of your NMT to remove the panel.
2. Insert the HDD into the NMT carefully and make sure the HDD is properly connected to the SATA connector.
3. Turn the NMT unit over and use the supplied screws to secure the HDD onto the unit.
4. Reattach the top panel that was removed in Step 1 with the four screws. To format your HDD and install the NMT Applications into your newly added HDD, refer to the **NMT Applications Installation** section below.




Note: Disconnect all attached cables on your NMT to ease the HDD installation.

5.2 NMT Applications Installation

1. Connect your NMT to your TV using the HDMI cable or a suitable connector.
2. Switch ON your NMT and allow it to start up (this may take up to 2 minutes).
3. Navigate to the Setup screen and select Maintenance.
4. At the Maintenance screen, select the NMT Setup Wizard.



Caution: The next step in this procedure will ERASE ALL DATA on your HDD. Ensure that you backup all the data on the HDD into a separate storage media.

5. At the NMT Setup Wizard screen, select Next to confirm the Fresh Setup option.
6. In the next screen, select Next to confirm the HDD selection.
7. Select Next to format your HDD using the ext3 format.
8. At the  warning notice screen, read the message and ensure that the correct selections have been made. Select Next to go to the NMT Setup Source screen.
9. At the NMT Setup Source screen, select Online or USB according to the source of the update NMT Applications file. To begin the NMT installation process, select Next.



Note: For an automated installation procedure, select Online at the NMT Setup Source screen (ensure that your NMT is connected to the internet).

To perform a manual NMT Applications installation, download the latest firmware package from the NMT website and unzip the files into the root drive of a USB flash memory device. For more information, see **Chapter 6.4.8: Firmware and NMT Applications Update**.

10. Your NMT will restart when the installation is completed. Your NMT is now ready for use.

5.3 Using the USB Slave Drive Function

To set up your NMT (with HDD installed) for use as a USB Slave drive, follow the steps below.



Note: For the HDD installation, refer to **Chapter 5.1: Hard Disk Drive (HDD) Installation**.

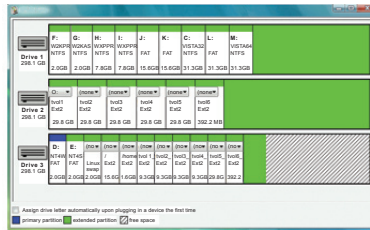
This installation applies to PCs running Microsoft(R) Windows Vista. For installation on other operating systems, refer to our Help and Support webpage at **<http://support.popcornhour.com>**.

1. Prepare your personal computer (PC) first before connecting the NMT by installing a **.ext** driver available for download at:

<http://www.fs-driver.org>

2. Download and install the .ext driver onto your PC by following the instructions below:
 - a. Double-click the downloaded **.exe** file to launch the installation.
 - b. Perform the installation with the following options selected:

- i. Enable the **read-only option** (option box unchecked)
 - ii. Enable **UTF-8 encoding** (option box checked)
 - iii. Enable the **large file feature** (option box checked)
- c. Complete the installation by clicking **Finish** at the final window.
- d. A popup window prompting you to format your HDD or device may appear after you click **Finish**. Click **Cancel**, as you are not required to format the HDD or device.
3. To ensure that the installation was completed successfully, look for the IFS Drives Control Panel Item in your PC's Control Panel (**Start > Control Panel**).
4. Turn ON your NMT and connect the USB Slave connection to your PC using the provided USB cable.
5. Double-click the IFS Drives Control Panel Item icon in your PC's Control Panel to launch the storage device formatting window, as shown below.



6. Identify your NMT (usually identified by the drive space of the HDD that you have installed into your NMT or the drive with three partitions) and select the partition with the largest storage space available. The selected partition will be displayed as an Ext2 partition.
7. Look for the dropdown window button displaying the word **(none)** and assign a drive letter to that partition; making sure that your computer or any other external storage devices do not currently use the drive letter. Close the window once done.
8. Now, browse to My Computer on your PC and you should be able to see the newly assigned Local Disk with the drive letter you selected earlier in Step 7.

9. Browse into the drive and you should be able to see some folders created by the installation process earlier.
10. Transfer your files into the appropriate folders for them to work in your NMT. For example, video files into the **Video** folder, photos into the **Photo** folder and so on.
11. Once the file transfers are completed, remove the USB connection by using the **Safely Remove Hardware** icon on your Windows Taskbar, then unplug the USB Slave connector from your PC and NMT.



Note: If your NMT does not appear as a connected external storage device on your PC, reinstall the Ext2IFS software and repeat the procedures above. If unsuccessful, refer to our helpful online community forum at <http://www.networkedmediatank.com>.



Important:




Please ensure that your Popcorn Hour A-110 NMT has been updated with the latest firmware. Firmware updates will ensure that your Popcorn Hour is compatible with the latest hardware and software available today.






This user guide is written for the Popcorn Hour A-110 NMT with firmware version:







01-17-090125-15-POP-403-000 or newer.









Refer to **Chapter 6.4.7: Maintenance** section below for a guide on updating your firmware.







6.1 Remote Control Functions

Button	Functions
 <p>POWER</p>	<p>Press once to put the NMT into Standby mode or to awaken the NMT from the Standby mode</p> <p>Press Power > Eject to reboot the NMT</p> <p>Press Power > Delete to turn off the NMT</p>
 <p>FILE MODE</p>	<p>Press once to display three options:</p> <ul style="list-style-type: none"> • Add file to list • Create Folder • Rename File <p>If you already have a file listed then you have further options:</p> <ul style="list-style-type: none"> • Add to list • Remove from list • Copy listed items here • Move listed items here • Create folder • Clear list • Delete listed items • Rename file <p>Press Enter on the highlighted file to confirm the selection.</p>
 <p>SETUP</p>	<p>Press once to access the Setup menu screen</p> <p>During video playback, press this button once to see the video display options</p> <p>Press Setup > Play to disable the Setup Page Lock option</p>

<p>BT SUSPEND</p>	<p>This button is reserved for future use</p>
<p> PAGE UP</p>	<p>Moves up a page on a list of media files Increases the volume during media playback</p>
<p> PAGE DOWN</p>	<p>Moves down a page on a list of media files Decreases the volume during media playback</p>
<p> USB DVDROM/ EJECT</p>	<p>Ejects an attached external CD/DVD-ROM drive Ends a media playback</p>
<p> TV MODE</p>	<p>Quick-access button to select a TV output resolution. See Video Mode Options for more information</p>
<p> MUTE</p>	<p>Mutes the audio output</p>
<p>0 - 9 Alphanumeric Keypad</p>	<p>Quick selection of media content according to their numbered listing on the menu screen Allows users to input alphanumeric values During media playback, pressing a number on the keypad will skip to a certain percentage of the total playback time of the media file. For example, pressing 3 will skip to 30% of the media file and start the playback from there</p>







<p>DELETE DELETE</p>	To erase alphanumeric values during input
<p>CAPS / NUM CAPS/NUM</p>	To switch between capitalized, numeric and non-capitalized letters during alphanumeric value input
<p> RETURN</p>	Return to the previous menu screen
<p> SOURCE</p>	Returns to the Media Source screen
<p> Directional Keypad (D-Pad)</p>	Allows you to navigate and highlight options or media files Partial time seek during movie playback (left and right directional keys only)
<p> ENTER</p>	Selects the currently highlighted selection or plays the highlighted media file (single file playback only)
<p> INFO</p>	Displays the timeline bar during media file playback. Press again to display the media file information such as the title, format, and other details
<p> HOME</p>	Returns to the Media Filters menu screen of your currently selected Media Source During a DVD playback, this button enables or disables Repeat A/B

 MENU	Jumps to the DVD Menu screen during DVD playback to allow playback customization
 PREV	Skips backward to the previous file/track
 PLAY	Plays the selected file/track and continues to the next file/track on the list
 NEXT	Skips forward to the next file/track
 TITLE	Opens the text input box for URL input while in a menu screen
 REV	Rewinds the current media playback
 STOP	Stops playback and returns to the menu screen
 FWD	Fast-forwards through the current media playback, continue pressing to toggle 2x, 4x and 8x fast-forwarding

 REPEAT	<p>Repeats the current selected media file.</p> <p>During music playback, this button offers three playback modes:</p> <ul style="list-style-type: none"> • Press once: Chosen song is played repeatedly. • Press twice: Playback will restart at the top of the list once the final song on the list is done playing. • Press three times: Disables the Repeat modes.
 ANGLE	<p>Switches the camera or viewing angle during DVD playback (only applicable for supported multiangle DVD playback formats)</p> <p>(Switches the PMT for TS with multiple-PMT support)</p>
 PAUSE	<p>Pauses the current media playback</p>
 SLOW	<p>Slows down the playback of the current media playback</p>
 TIME SEEK	<p>Allows you to time-peek the current selected media for a jump to a particular playback time; hour:minute:second = 00:00:00</p> <p>(use numeric buttons to input the desired playback time)</p>
 AUDIO	<p>Toggles between the available audio modes</p>



Tip: Replace the batteries with two new AAA batteries if the remote control is slow to respond or does not respond at all.

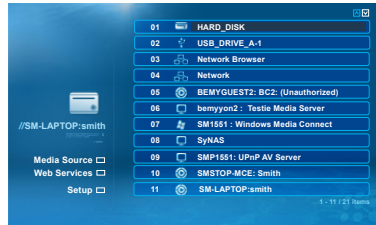
 SUBTITLE	<p>Turns ON the subtitles and toggles through its options (if available with your video playback)</p> <p>More functions of the Subtitle button:</p> <ul style="list-style-type: none"> • Press once for timing offset. Use the Left/Right D-Pad buttons to set the timing offset • Press twice to display the language used. Use the Left/Right D-Pad buttons to toggle between languages or turn subtitles OFF • Press three times to change the color of the subtitles. Use the Left/Right D-Pad buttons to change the colors • Press four times to display the subtitle size. Use the Left/Right D-Pad buttons to change the size • Press five times to change subtitle position. Use the Left/Right D-Pad buttons to lower/raise the subtitle position on the screen • Press the Subtitle button on the Media Source screen to display the time
 ZOOM	<p>Toggles between the available viewing options</p> <p>During single file playback, the Zoom button functions:</p> <ul style="list-style-type: none"> • Press once and use the Left/Right D-Pad button to toggle between Actual Size, Fit To Screen, Crop or Full Screen • Press twice to Magnify the screen size. Use the Left/Right D-Pad buttons to reduce or zoom by 1% increments • Press three times to Pan/Scan. Use the Left/Right and Up/Down D-Pad buttons to move the display screen on the X-axis/Y-axis <p>During DVD Playback;</p> <ul style="list-style-type: none"> • During playback of a DVD/ISO file, press Zoom once, then use Left/Right D-Pad buttons to zoom in/out
 RED button	<p>Jumps to the Video media filter</p>
 GREEN button	<p>Jumps to the Music media filter</p>
 YELLOW button	<p>Jumps to the Photo media filter</p>
 BLUE button	<p>Jumps to the Others media filter</p>



Tip: The four media filter buttons may have extra functions depending on the applications used, such as third-party HTML servers and when browsing MSP portals. The extra functions will be displayed onscreen for easier reference when available.

6.2 Media Source

This option is used to select the desired source of media to playback on your NMT. If an external HDD is connected to your NMT via USB, it will appear on the screen as an option for you to select. All the storage devices that are successfully connected to your NMT will appear on this screen.



6.3 Web Services

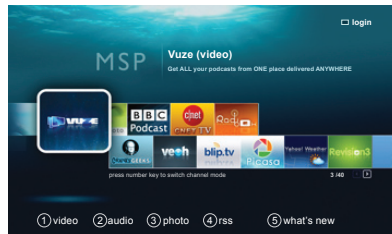
This option allows you to connect to Internet-based services such as the Media Service Portal (MSP), view the BitTorrent status screen, and access URLs from your most frequently visited web service sites.

By selecting the **Add/Edit** option on the top left side of the Web Service menu page, you may add and/or edit web services to your NMT, as shown below.



6.3.1 Media Service Portal

The Media Service Portal allows you to access popular unicast web-based media content such as YouTube, Picasaweb and Flickr using your NMT.



6.3.2 MSP Community

The MSP Community is a web community containing user-developed plugins.



For more information about the MSP Community, kindly refer to:

http://www.networkedmediatank.com/wiki/index.php/Web_Services

6.3.3 Torrent

The Torrent screen allows you to view and control the status of your BitTorrent downloads.

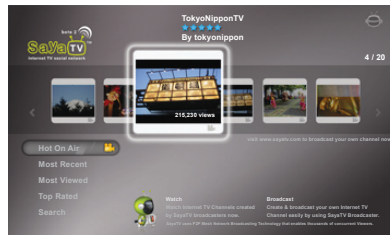


Note: This option requires the installation of a HDD and the NMT Applications.
For more information about BitTorrent downloads, see **Torrent Setup**.

6.3.4 SayaTV

SayaTV is a peer-to-peer (P2P) Internet TV streaming technology that allows you to view media content using your NMT.

You can create and broadcast your own Internet TV Channel easily by using **SayaTV Broadcaster** and watch it on your PC with Internet Explorer or with your NMT.



6.4 Setup

The Setup screen allows you to configure various options of your NMT.

A description of the available options on the Setup screen is listed below.


Home	Returns to the Media Source screen or the media list of the current media source.
Preferences	Allows you to configure general settings for your NMT.
Audio / Video	Displays settings for video output as well as video aspect ratio control.
Network	Displays current IP information and allows the configuration of network settings.
Network Share	Allows you to configure the media servers.
NMT Applications	Allows you to configure the settings for the BitTorrent client and other installed applications. This screen will only be enabled when a HDD has been installed into your NMT and the NMT Applications have been installed.
DVD / Audio CD	Allows you to configure the content parental control levels, the Autoplay function, the audio output and subtitles used when a DVD or CD player is connected to your NMT.
Maintenance	Displays the current device firmware information and allows you to check for firmware updates. The NMT Setup Wizard is also available on this screen.



Tip: Remember to select **SAVE** when your customization is complete to confirm your selections.

6.4.1 Preferences

This setup screen allows you to set your preferences for some features of the NMT.

Options	Description
Language	Allows you to set the display language of your NMT.
Subtitle Language	Displays the subtitle language (if available) during video playback.
Play Mode	Allows you to set the repetition mode of your media during playback.
Photo Transition	Allows you to set the transition type when viewing photos in a folder.
Photo Interval	Allows you to set the time length that a photo will be displayed (up to 120 seconds).
Screen Saver	Allows you to set the idle time length before the screensaver displays.
Setup Page Lock	<p>Allows you to lock the settings made on the Setup page to prevent accidental changes in the settings.</p> <p> Tip: To disable the Setup Page Lock, press Setup > Play on your remote control. Remember to SAVE your settings to confirm your selection</p>
RC Key Repeat	<p>Allows you to select the option to enable or disable the remote control key repeat.</p> <p>When set to On, the key repeat is enabled</p>

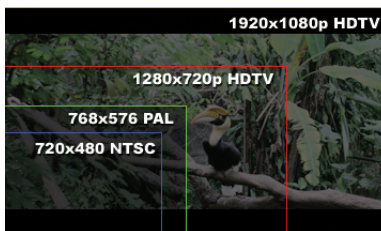
6.4.2 Audio/Video

This option allows you to configure your NMT to produce the best possible audio and visual experience for your enjoyment.

6.4.2.1 Video Mode Options

This setup screen allows you to customize the video output modes of your NMT to suit your TV or projector.

Options	Description
Video Output	<p>Allows you to select the video output mode and resolution of your NMT. Kindly refer to your TV or projector user manual to determine the best output resolution for the video display.</p> <p>There are three video modes available:</p> <ul style="list-style-type: none">• Composite Mode• Component Mode• HDMI Mode <p>For the Component and HDMI modes, you will be able to select the output resolution to better suit your TV. Shown below is a comparison of the resolution sizes.</p>



Listed below are the remote control quick-access buttons for some of the common TV resolutions.

Quick-access button	Video resolution
TV Mode -> 0	Auto (default)
TV Mode -> 1	Component/Composite NTSC 480i
TV Mode -> 2	Component/Composite PAL 576i
TV Mode -> 4	Component 720p60
TV Mode -> 5	Component 1080i60
TV Mode -> 6	Component 1080p60
TV Mode -> 7	HDMI/Component 720p60
TV Mode -> 8	HDMI/Component 1080i60
TV Mode -> 9	HDMI/Component 1080p60

Framerate Sync	Select a framerate sync for the video output if the playback shows an inconsistent or poor sync rate.
Video Zoom	Allows you to select the default video zoom output of your NMT. Zoom options: Actual Size, Fit to Screen, Crop View and Full Screen View.
TV Type	Allows you to set the viewing aspect ratio to suit your TV or projector. Please refer to the user manual supplied with your TV to determine the best viewing aspect ratio.
Colorspace	Allows you to choose a suitable colorspace for the NMT display output.

6.4.2.2 Audio Mode Options

This setup screen allows you to customize the audio output modes to suit your TV or audio system.

Options	Description
HDMI Audio	Allows you to enable or disable the HDMI audio when using a HDMI cable to connect your NMT and TV.
Surround Mode	Allows you to choose the audio output mode of your NMT. Choose from either Stereo or 5.1 audio output depending on your audio setup. (Only select 5.1 audio when using HDMI)
DTS	Allows you to configure your NMT DTS audio output as analog, digital, or DTS-HD.
AC3 (Dolby Digital)	Allows you to configure your NMT Dolby Digital audio output as analog or digital.
AAC	Allows you to configure your NMT AAC audio output as analog or digital.
WMA Pro	Allows you to configure your NMT WMA Pro audio output as analog or digital.



Note: Please ensure that your audio system is fully compatible with the selected output options. If there is no audio output after an audio setting has been changed, kindly reset the audio to the previous working option.

6.4.3 Network

This setup screen allows you to customize your NMT to work with your network.

Options	Description
Mode	Allows you to select the wired or Wi-Fi IP address assignment mode (auto or manual).
Time Zone	Allows you to select the time zone in which your NMT is located.
Time Server	Allows you to input the URL of the server that your NMT retrieves the day and time information. The default URL is set to pool.ntp.org.
Daylight Saving	Allows you to enable or disable Daylight Saving Time (only applicable to countries that practice daylight saving time).
MAC Address	The MAC address of your NMT is displayed here.
IP Address	Displays IP address of your NMT on your network. Select the Configure IP option to configure an IP address for your NMT on your network

6.4.4 Network Share

Network Shares allow the NMT to stream media content stored on external devices connected together within the same local network. The NMT supports Samba (SMB), File Transfer Protocol (FTP), and Network File System (NFS) shares.

This setup screen allows you to configure the various media servers available for use on your NMT. For more information about the settings and options available, see **Media Sharing**.

6.4.5 NMT Applications

This screen allows you to set your NMT device name and workgroup for use on a Samba Workgroup as a Samba server. The Samba server allows your PC to access media or files stored on your NMT.

This screen also allows you to stop or start an application that has been installed and configured on your NMT. Press **ENTER** on your remote control to stop a running application or start a stopped application.

NMT Applications are network services that can be installed onto your NMT to further extend its functionality. The added network services are such as:

UPnP AV Server	This functions as UPnP AV server to share your NMT media to other UPnP AV clients.
myiHome Server	Allows you to access media files on your NMT over HTTP with a HTML-based UI.
FTP Server	File Transfer server.
Samba Server	Samba remote filesharing server.
NFS Server	NFS remote filesharing server.
Torrent	Allows you to perform and maintain BitTorrent downloads.
Usenet Client	Allows you to use the Usenet downloading service.
Casgle iDVR	Enables you to view Video Podcasts on your NMT (requires HD TV)

For **NMT Applications** installation, see **NMT Applications Installation**.

To set up the NMT Applications to function on your network, see **Configuring the NMT Applications**.


6.4.6 DVD/Audio CD

This setup screen allows you to configure the DVD and Audio CD settings of an attached external USB CD/DVD-ROM drive.

Options	Description
Parental Control	Allows you to turn the parental control on or off.
Autoplay	Allows you to turn Autoplay on or off when a CD or DVD is inserted into the external USB CD/DVD-ROM drive.
Audio	Allows you to select the default language for your audio output from a DVD or CD.
Subtitle Language	Allows you to select the default language for the subtitles to be displayed when playing a DVD movie from the external DVD-ROM drive.

6.4.7 Maintenance

This setup screen allows you to view and perform maintenance of your NMT.

Options	Description
Firmware Version	Displays your current NMT firmware version.
Kernel Version	Displays the current NMT kernel version.
NMT Version	Displays the current of your NMT Applications version.
Check for firmware update	Select this option to allow your NMT to check for the latest firmware available. Your NMT has to be connected to the internet to use this function.
NMT setup wizard	Select this option to setup your NMT when a new HDD is installed into your NMT. This option will format your HDD to work with your NMT and install the required NMT Applications.  Note: This setup wizard will erase all data in your HDD if a Fresh Setup is selected.
Reset to factory settings	Resets your NMT to its factory default settings.

6.4.8 Firmware and NMT Applications Update

There are two methods to update the firmware of your NMT. Choose one of the procedures below.



Caution: Do NOT attempt to turn off or restart your NMT when the unit is performing a firmware update, as doing so will damage your unit.

Online Method



Note: Both the firmware and NMT Applications updates are included in the firmware update file.

1. On your NMT, stop all torrents from uploading and downloading.
2. Stop all file copying/transferring and all network shares.



Note: Unplug all USB devices connected to your NMT.

3. Restart the unit.



Note: To restart the unit, switch the unit off using the **On/Off** switch at the rear panel and unplugging the power adapter. Wait for 60 seconds before reconnecting the power adapter and switching the unit on using the **On/Off** switch. Once the Media Source screen appears on your TV, the restart is completed.

You may also try the following:

Press the Power button, then the USB DVDROM Eject button. The red Standby indicator and amber Power indicator will display while the unit is restarting. Once the Media Source screen appears on your TV, the restart is completed.

4. Ensure that your NMT is connected to the Internet.

5. Go to **Setup > Maintenance > Update** and select **Check for Firmware Update**.

6. Allow the unit to check for updates and perform them if there are updates available (this may take up to a few hours depending on your Internet connection speed and bandwidth).

7. Your NMT will restart when the update is completed.

USB Method (Offline)

To update your NMT without using the **Check for Firmware Update** function, follow the steps below.



Note: Both the firmware and NMT Applications updates are included in the firmware update file.

1. Using your PC and an Internet connection, download the latest firmware updates from the link below.

http://www.popcornhour.com/download/firmware_update.html

2. Once the download is complete, unzip the files into the root folder of a USB flash memory device. Please ensure that the file **usbupdate.html** is present on the USB flash memory device.
3. On your NMT, stop all torrents from uploading and downloading.
4. Stop all file copying/transferring and all network shares.



Note: Unplug all USB devices connected to your NMT.

5. Restart the unit.



Note: To restart the unit, switch the unit off using the **On/Off** switch at the rear panel and unplugging the power adapter. Wait for 60 seconds before reconnecting the power adapter and switching the unit on using the **On/Off** switch. Once the Media Source screen appears on your TV, the restart is completed.

You may also try the following:

Press the Power button, then the USB DVDROM Eject button. The red Standby indicator and amber Power indicator will display while the unit is restarting. Once the Media Source screen appears on your TV, the restart is completed.

6. Plug the USB flash memory device into a USB port on your NMT. Use the Media Source screen to select the USB flash memory device.

7. Select the **Others**  option filter to view the contents of your USB flash memory device.

8. Locate the file **usbupdate.html** and press **ENTER** on the remote control to select it.

9. You will see a blue or white screen with the firmware version displayed. Press **ENTER** again to start the firmware update.

10. Do NOT turn off your NMT while the update is running, as it will cause your NMT to stop working.

11. Your NMT will restart when the update is completed.

NMT Applications Update

To update or reinstall the NMT Applications on your NMT, follow the instructions below.

1. Using your PC and an Internet connection, download the latest update file from the link below.

http://www.popcornhour.com/download/firmware_update.html

2. Once the download is complete, unzip the files into the root folder of a USB flash memory device. Rename the file **syb8634.nmt** to **apps.nmt**.

3. On your NMT, stop all torrents from uploading and downloading.

4. Stop all file copying/transferring and all network shares.



Note: Unplug all USB devices connected to your NMT.

5. Restart the unit.



Note: To restart the unit, switch the unit off using the **On/Off** switch at the rear panel and unplugging the power adapter. Wait for 60 seconds before reconnecting the power adapter and switching the unit on using the **On/Off** switch. Once the Media Source screen appears on your TV, the restart is completed.

You may also try the following:

Press the Power button, then the USB DVDROM Eject button. The red Standby indicator and amber Power indicator will display while the unit is restarting. Once the Media Source screen appears on your TV, the restart is completed.

6. Plug the USB flash memory device into a USB port on your NMT.
7. On your NMT, browse to **Setup > Maintenance > NMT Setup Wizard**.
8. Select **Typical Setup**, press **Next**, then select **USB** as the setup source. Press **Next** to reinstall or update the existing NMT Application on your NMT.
9. Do NOT turn off your NMT while the update is running, as it will cause your NMT to stop working.
10. Your NMT will restart when the update is completed.

7.1 NAS (Network-Attached Storage) Functions

7.1.1 FTP Server

The FTP service allows for simple and convenient file transfer to and from your NMT.

1. Connect with an FTP client, such as **FileZilla**.
2. Use the following settings and credentials:

Host	:	IP address of your NMT
Port	:	21
Username	:	ftuser
Password	:	1234

7.1.2 SMB Server

Samba Share (SMB) is one of the most common ways to share files over a network. SMB can be used for streaming your media files as well.

1. Connect to the NMT with the unit's IP address or browse to the SMB host name;
for example **\\PCH-A110**.
2. Use the following credentials:

Username	:	nmt
Password	:	1234

7.1.3 NFS Shares (Network File System)

7.1.3.1 haneWIN NFS Server

For information on the haneWIN NFS Server, visit **<http://www.hanewin.net/>**

7.1.3.2 Setting up NFS Shares on Linux OS

Follow the steps below to set up a NFS share on Linux OS.

1. Configure the kernel to include the NFS file-system and server support.
2. Edit the **/etc/exports** file and add the following commands as a new line:

<access path> <allowed IP address range+permissions>

For example: **/home/share 192.168.0.0/24(rw)**

This will share the **/home/share** folder to everyone in the **192.168.0.x** network with Read and Write (**rw**) permissions.

3. Run **/usr/sbin/exportfs -a** to update the changes.

7.1.4 Syabas CE-HTML Server (myiHome)

Showcasing your digital content is made simpler by having an organized media library.

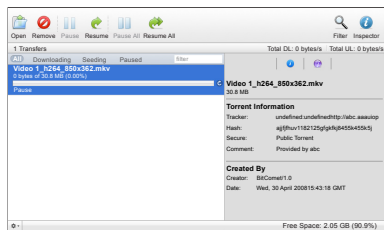
The **myiHome Media Server** is a proprietary server software designed for your PC to ease the sharing of your media with your NMT.

Popcorn Hour provides the myiHome software for use with your NMT, and it can be downloaded from:

<http://www.popcornhour.com/download/myihome/myihome.html>

Once the myiHome software is installed on your PC, it should be automatically detected by your NMT, and added to the list on your Media Source screen.

7.2 Torrents Setup



To setup your NMT to perform BitTorrent downloads, you must first have the NMT Applications installed on your NMT. The supplied BitTorrent client is accessible using your PC connected to the NMT via network. Follow the steps below to access the BitTorrent client:

1. On your PC, use a web browser to access the BitTorrent client on the NMT. Type the following address in the URL address bar of the web browser:

<http://NMT-IP:8883/torrent/bt.cgi>

(where NMT-IP is the IP address of your NMT on your network, for example 192.168.2.2.)

2. At the BitTorrent client GUI, click on **Browse** and select the torrent file that you have downloaded to your PC earlier.
3. Once the torrent file is selected, click on **Upload** to add the torrent file to the torrent list on your NMT. The BitTorrent client will start the torrent download if the Torrent option on your NMT is enabled.
4. Other functions available such as the Scheduler can be used to schedule torrent downloads and set their upload/download limits, or the Setting screen to customize the BitTorrent client.



Note: The NMT has to be switched ON and properly connected to the Internet during the scheduled download time in order for the BitTorrent client to download the required files.

7.2.1 Enable/Disable BitTorrent Downloading

The BitTorrent client runs as a service on the NMT and installed together with the NMT Applications package.

To enable or disable the BitTorrent service, follow the steps below:

1. Go to **Setup > NMT Applications**.
2. In the list of installed NMT Applications, locate the Torrent application and notice its status.
3. If the status is labeled **Start**, it means that the BitTorrent client is currently disabled. Select **Start** to enable it or **Stop** to disable the BitTorrent client.

7.3 Usenet Client Setup: NZBGet

NZBGet is a command-line based binary newsgrabber that downloads files from Usenet servers based on information given in **NZB files**. NZBGet can be installed on the NMT and the files can be downloaded straight into the NMT.

To run the NZBGet application you need access to a Usenet provider. Your ISP may have a news server that you can access, or you can have a separate Usenet account on a **pay-server**. Usenet accounts vary in prices from a few dollars up to \$35 a month depending on your needs. There are many Usenet servers to choose from, and here is a list provided by Google:

<http://www.google.co.uk/search?q=usenet+provider+comparison>

Once you have a Usenet account, you can configure NZBGet on your NMT to access the account. Your Usenet provider will provide you with the information required, such as:

1. User ID and Password.
2. News-server name and port to connect (usually at port **119**).
3. Number of concurrent connections allowed.

7.3.1 Setting up the NZBGet on the NMT

In the root of your hard disk you will find a folder called **.nzbget**. Inside this folder you will find two files: **nzbget.conf** and **unpak.sh**.



Note: Some FTP clients may hide this folder because it begins with a dot `..`. On UNIX systems, files or folders that begin with a dot are hidden from normal directory listings. If you cannot see the folder, find an option on your client that will show hidden files or try to type in the folder name.

You can open and edit **nzbget.conf** with a text editor.



Note: To edit the **nzbget.conf** file, use a UNIX-format capable text editor.

In the text editor, fill in the information you got from your Usenet provider:

Host-name of news server:

server1.host=news.yourserver.com

(Put the server name behind the =)

Port to connect to
(default should be set to **119** if not specified):

server1.port=119

Username to use for authentication
(change **USERNAME** to the name supplied by your Usenet provider):

server1.username=USERNAME

Password to use for authentication
(change **PASSWORD** to the password supplied by your Usenet provider):

server1.password=PASSWORD

Maximum number of simultaneous connections to this server:

server1.connections=4

Once completed, save the file to the same place and restart the Usenet service in the NMT Applications menu (**Setup > NMT Applications**).

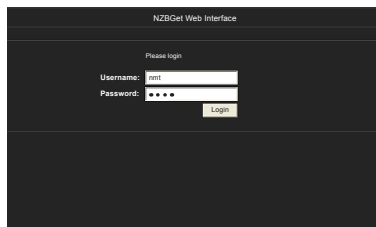
7.3.2 Usenet: Working with NZBGet

Working with NZBget is simple and quick. Connect to the NZBGet web GUI from a browser via ***http://ip.of.your.nmt:8066***.

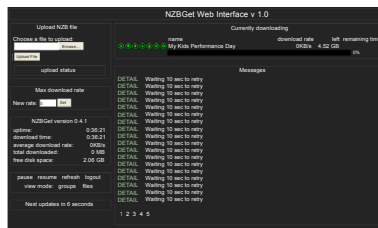
Note: If the IP address of your NMT is ***192.168.1.100***, type ***http://192.168.1.100:8066*** in the address bar of your web browser.

To log in, use the following access username and password:

User ID : **nmt**
Password : **1234**

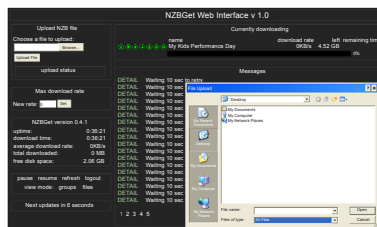


You will now see the NZBGet web GUI, as shown below:



7.3.3 Downloading

To perform a download, upload your NZB file by clicking on the **Choose...** button and browsing to the NZB file, as shown below.



Next, click the **Upload File** button and begin the download.

The file will be uploaded to your NMT and added to download queue. (This process does not upload any files to the Internet).

After uploading the NZB file, it will take a minute before the program commences the download. There is a safety interval of 1 minute to allow NZBGet to ensure that the NZB file is completely on the HDD before commencing the download. You may adjust the safety interval in **nzbget.conf**, option **NzbDirFileAge**. The progress of the download is displayed on the web GUI for your convenience.

After a download is finished and the NZB file set contains **par2** files, your download will be checked and repaired if necessary. The unpack script in **.nzbget** will be called and your download will be unpacked. The unpack script of the NMT is able to unpack **.RAR** packed files and also unpack **.RAR** files nested inside of **.RAR** packs.

With the GUI you will be able to pause, delete, and move your downloads. You may set the file download priority of important file by moving them to the top of the queue with the buttons in front of the file set.

If you want to pause all downloads, you can do that via the **pause** button on the bottom left of the web GUI, and restart it again with the **resume** button.

All downloads will be downloaded and unpacked to the folder **Download** on your NMT's HDD and will be in a folder that has the same name as the NZB file you uploaded, so be sure to give your NZB files descriptive names to ease identification.

For more information and download optimization tips, kindly refer to:

<http://www.networkedmediatank.com/wiki/index.php/Nzbget>

8.1 Frequently Asked Questions (FAQs)

This collection of frequently asked questions (FAQs) provides brief answers to many common questions about the Popcorn Hour A-110 NMT.

Q1: Why are there scratches on the front panel of my Popcorn Hour A-110 NMT?

The front panel of your NMT comes factory-fitted with a protective plastic wrap. Peel off the thin transparent plastic wrap from front panel to remove the scratched plastic wrap (the top panel of your NMT may have to be removed to get to the plastic wrap).

Q2: Why can't I playback my DVD .iso file using myiHome?

myihome does not support DVD playback. Please use the SMB/NFS functions for DVD .iso playback.

Q3: My Popcorn Hour A-110 NMT will not start after resetting it using the factory default settings function.

The factory default setting function will reset your video display to the Auto mode, which may not be compatible with your TV or projector. Refer to **Video Mode Options** to change your display mode to suit your TV or projector.

Q4: There is no display or video output after waking up the Popcorn Hour A-110 NMT from Standby mode.

This is because the Video output mode has been changed using the **TV MODE** key and the settings were not saved. Go to **Setup > Audio/Video** to configure the Video Output mode again and save the settings using the SAVE button.

Q5: (HDMI Mode) During initial setup, no display or video signal detected.

1. Disconnect the HDMI connection and connect your NMT to your TV using a Composite Video connection
2. Restart the NMT and wait for the loading screen to appear
3. Wait until the screen goes blank
4. Press **TV MODE -> 1** for NTSC or **TV MODE -> 2** for PAL on your remote control to force a video output mode.
5. Once the menu screen is visible, go to **Setup > Audio/Video** and set up the proper HDMI output mode for your TV and then SAVE the selection.

6. Remove the Composite Video connections and reconnect the HDMI connectors to the NMT and your TV.
7. Restart the NMT.

Q6: Can I plug in an external CD/DVD-ROM drive?

Yes, the USB port can support an external CD/DVD-ROM drive. However, the NMT does not support CSS encryption. Your DVD must region-free and encryption-free in order to use the CD/DVD-ROM drive function.

Q7: Where can I download/update the firmware for my Popcorn Hour A-110 NMT?

See **Firmware and NMT Applications Update** for instructions and more information.

Q8: Help, my video files are not playing. Is this a bug or a faulty Popcorn Hour A-110 NMT?

Not all codec and encoding formats are compatible with your NMT. See **Supported Audio/Video Formats** or go to **MediaInfo** (<http://mediainfo.sourceforge.net/>) for more information.

For further help and information regarding video playback, kindly refer to our forum at <http://www.networkedmediatank.com> for advice.

Q9: Why won't the video subtitles appear?

- Ensure that the subtitles are in a supported format
- The subtitle file must be in the same folder as the video file
- The name of the subtitle file must be the same as the name of the movie (except for the file format extension).
- The Subtitle Language (**Setup > Preferences > Subtitle Language**) must not be set to None, as this will disable all subtitles. Remember to save the setting when done.

Q10: How do I back up my DVD so that it can be played back by the Popcorn Hour A-110 NMT ?

The DVD has to be saved into the **.iso** format. DVD **.iso** playback is only supported via NFS/SMB network connection (it will not work with myiHome). In case of poor quality playback in SMB, use NFS to share the file.

Q11: How do I recover the Popcorn Hour A-110 NMT from a failed firmware update with the fail-safe kernel?

To recover the NMT if the firmware update fails and the NMT is no longer responding, visit the following link for the latest methods and required files. (PC with internet connection required)

<http://support.popcornhour.com/article.aspx?id=1053>



Note: This method is only applicable for the Popcorn Hour A-110 NMT.

Q12: What are the hard disk drives (HDDs) that are compatible with the Popcorn Hour A-110 NMT?

For an updated list of compatible HDDs, please refer to:

http://www.networkedmediatank.com/wiki/index.php/HDD_Compatibility

Q13: How do I fix the EXT2/EXT3 filesystem in the Popcorn Hour A-110 NMT if it is corrupted?

1. Download the tools from ***http://files.syabas.com/networkedmediatank/scan_package.zip*** and unzip them into the root folder of a USB flash storage device.

2. Select the USB flash storage device as the Media Source and browse to the **Others** media filter. Select the **scandisk.html**.
3. Select the **Disable NMT** option.
4. Then click on the **Scan NMT Partition** option to scan the HDD partition for damaged sectors. Restart the NMT when the scanning has been completed.
5. Browse to the **Others** media filter again and select **Enable NMT**.
6. Restart the NMT and test the options or services that were affected.
7. If the problem persists, reinstall the **NMT Applications** or repeat steps 3 to 6 with the **Scan Content Partition** option selected.

8.2 Technical Support Contact Information

If you experience problems not listed in the Troubleshooting chapter and require help and support for your NMT, kindly refer to our online Help and Support webpage at:

<http://support.popcornhour.com>

For more information, you can visit our online Wiki at:

<http://www.networkedmediatank.com/wiki>

You may also visit our helpful online forum at:

<http://www.networkedmediatank.com>



Note: PC with Internet connection required

Listed below are the product specifications for the Popcorn Hour A-110 Networked Media Tank.

9.1 Physical

Dimension	
Width	10.5" (270 mm)
Depth	5.25" (132 mm)
Height	1.25" (32 mm)
Weight	2.2 lbs (1 kg)

9.2 Electrical

External Power	12V DC, 3A 100 ~ 240V
----------------	--------------------------

9.3 Chipset and Memory

Chipset	Sigma Designs SMP8635
Memory	256MB DDR SDRAM, 32MB Flash

9.4 Ports and Connectors

Internal	SATA (For HDD)
External	2x USB 2.0 Host (one in front and one in the rear panel) 1x USB 2.0 Slave Ethernet 10/100Mbps (RJ-45 LAN) Power Supply
Audio	S/PDIF Optical Digital Composite Audio
Video	HDMI (with audio) Component Video S-Video Composite Video

9.5 Audio/Video Output

Audio	S/PDIF Optical Digital Audio Composite Audio (Stereo) HDMI
Video	HDMI c1.3a (up to 1080p) Component Video (up to 1080p) S-Video Composite Video

9.6 Supported Audio/Video Formats

Video Containers	MPEG1/2/4 Elementary (M1V, M2V, M4V) MPEG1/2 PS (M2P, MPG) MPEG2 Transport Stream (TS, TP, TRP, M2T, M2TS, MTS) VOB AVI, ASF, WMV Matroska (MKV) MOV (H.264), MP4, RMP4
Video Codec	XVID SD/HD MPEG-1 MPEG-2 <ul style="list-style-type: none">• MP@HL MPEG-4.2 ASP@L5, 720p, 1-point GMC WMV9 <ul style="list-style-type: none">• MP@HL

Audio Containers	<p>H.264</p> <ul style="list-style-type: none">• BP@L3• MP@L4.0• HP@L4.0• HP@L4.1 <p>VC-1</p> <ul style="list-style-type: none">• MP@HL• AP@L3 <p>AAC, M4A</p> <p>MPEG audio (MP1, MP2, MP3, MPA)</p> <p>WAV</p> <p>WMA</p> <p>FLAC</p> <p>OGG</p> <p>Dolby Digital</p> <p>DTS</p> <p>WMA, WMA Pro</p>
------------------	--

	AAC MP1, MP2, MP3 LPCM FLAC Vorbis
Audio Pass Through	DTS Dolby Digital DTS-HD MA DTS-HD HR Dolby True HD Dolby Digital Plus

Photo Formats	JPEG BMP PNG GIF
Subtitle Formats	SRT SMI SUB SSA
Other Supported Formats	ISO IFO

9.7 Web Services

Video	YouTube, Veoh, Videocast, DLTV, Cranky Geeks, Bliptv, PodfinderUK, Vuze, Break Podcast, Revision 3, CNN The Larry King Podcast, CNN Anderson Cooper 360, The CNN Daily, CNN In Case You Missed It , NBC Meet The Press, NBC Today, CBS Face the Nation, NBC Nightly News, Mevio.
Audio	Live365 Radio, iPodcast, Radiobox, ABC News, BBC Podcast, CNN News , Indiefeed, Jamendo.
Photo	Flickr, Picasaweb.

RSS Feeds	Bloglines, Yahoo! Weather, Yahoo Traffic Alerts, Traffic Condition, Cinecast, Yahoo! News, MSNBC News.
Peer-to-peer TV	SayaTV.
Internet Radio	Shoutcast.

9.8 Connectivity

Types	Bonjour UPnP SSDP UPnP AV Windows Media Connect Windows Media Player NSS SMB NFS BitTorrent P2P
HTTP Servers	myiHome, WizD, SwissCenter, MSP Portal, Llink, GB-PVR
NAS Access	SMB, NFS, FTP