


C200 Mini II PCI Wifi Card Guide

Steps Installation

For installation setup of the followed steps as below:

 **Note:** Please do not power up C-200 when install the Mini MII PCI Wifi card

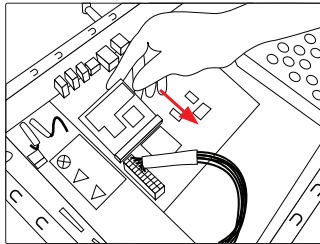


Figure 1.0 : Install the Mini MII PCI Wifi card

Step 1
Install the Mini MII PCI Wifi card gently into the PCI interface on the C-200 main board.

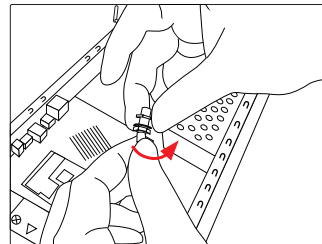


Figure 3.0 : Remove the hex nut

Step 3
Remove the hex nut from the SMA female connector

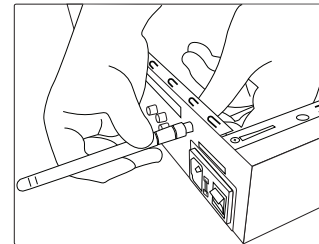


Figure 5.0 : Install WLAN antenna

Step 5
Install gently the WLAN antenna on the SMA female connector. (No need to install the WLAN antenna until tight)

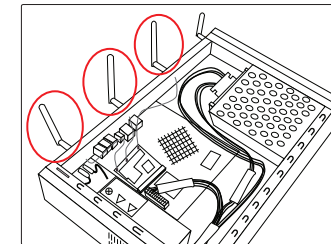



Figure 7.0 : 3 WLAN antenna cables

 **Note:** You may need to repeat Step 2 to Step 6 for 3 WLAN antenna cables

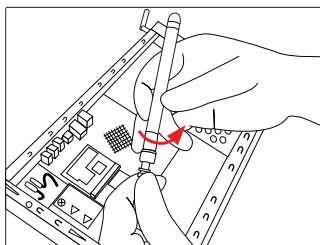


Figure 2.0 : WLAN antenna anti-clockwise

Step 2
Remove the WLAN antenna anti-clockwise from the SMA female connector

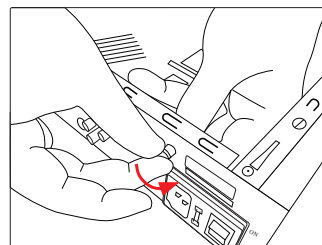


Figure 4.0 : Install the hex nut on the C-200 back panel

Step 4
Locate the SMA female connector on the C-200 back panel and install tight the hex nut on the SMA female connector (There are 3 hole available for WLAN antenna to be install)

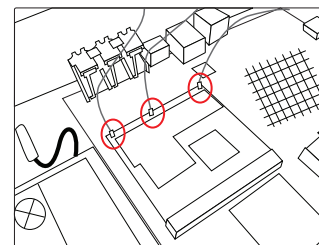


Figure 6.0 : Locate the pigtail cable connector

Step 6
Locate the pigtail cable connector from 3 WLAN antenna and press to install on the Mini PCI Wifi Card connector surface