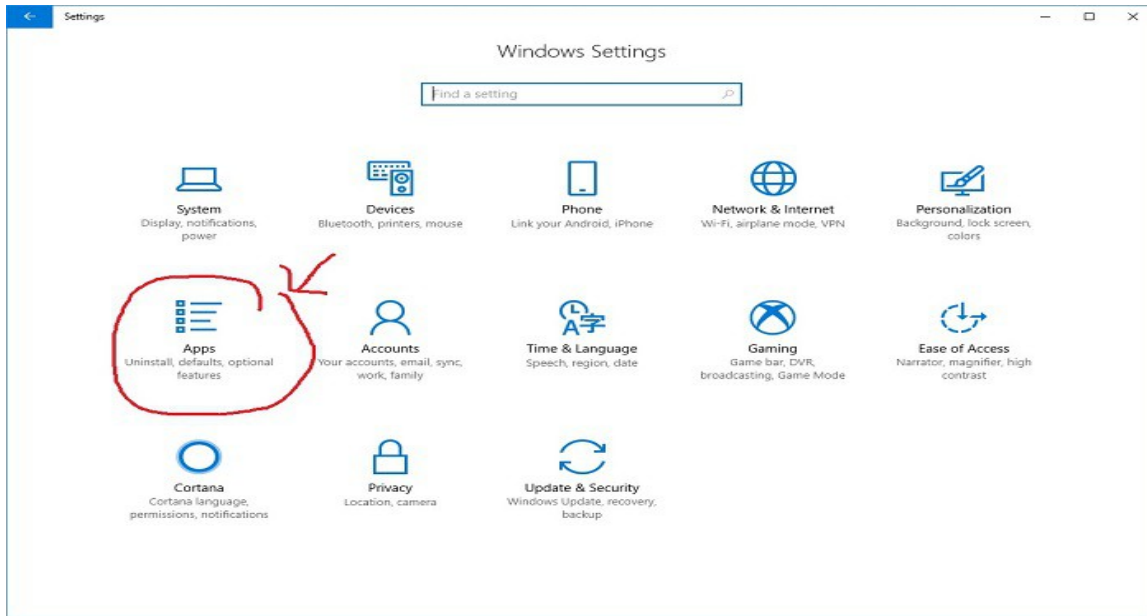
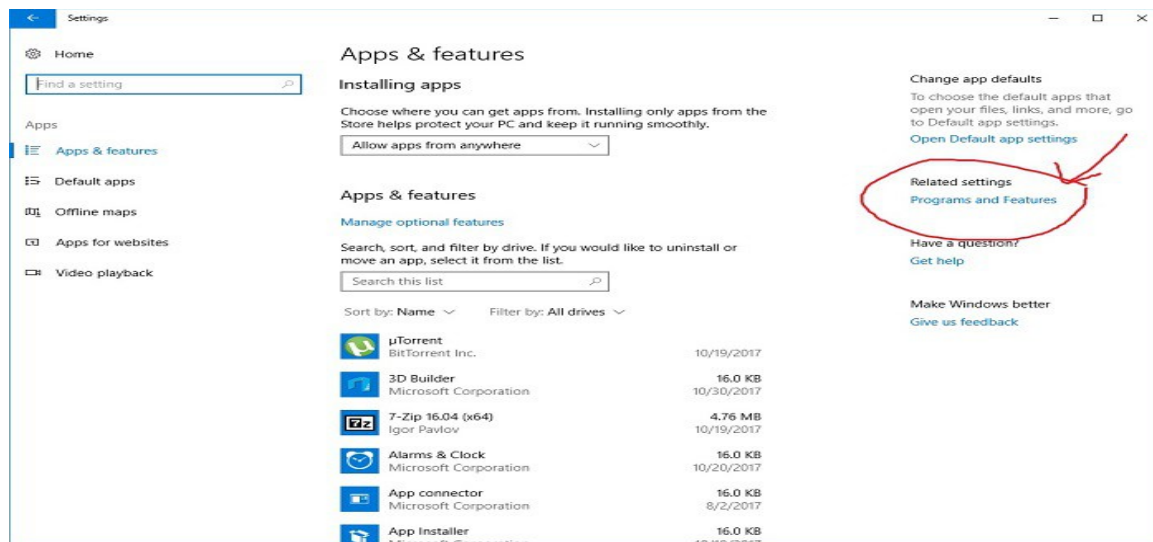


Enable SMB1 in Windows 10 Fall Creators Update (build 1709) to shared folder for Popcorn Hour devices

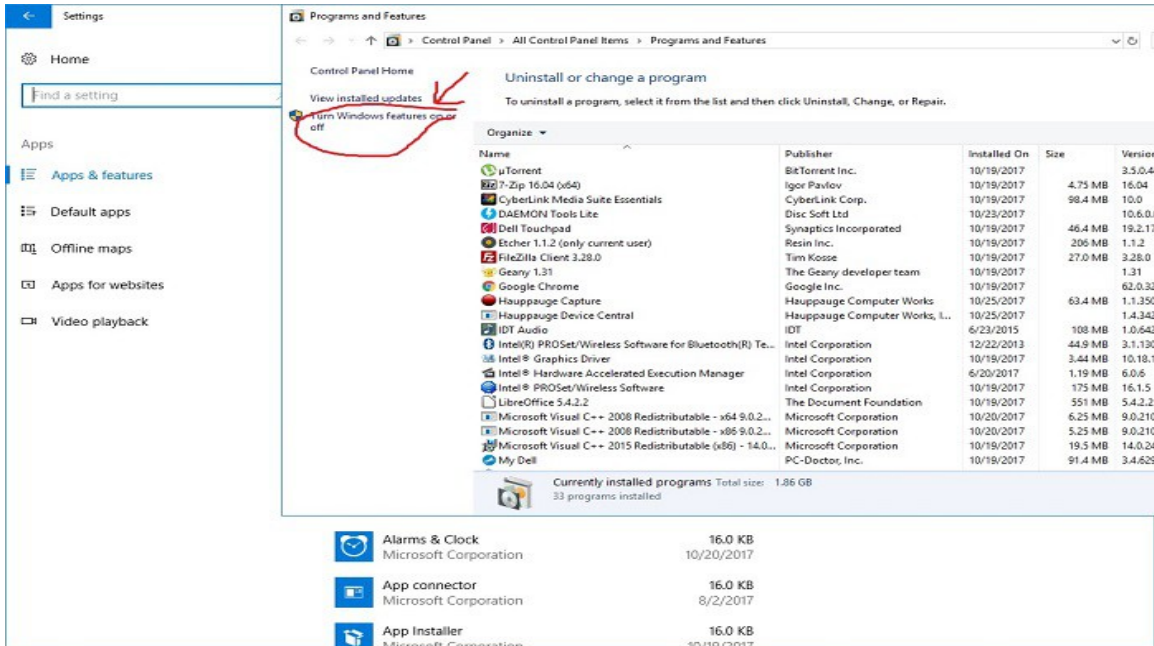
Step 1 : Go to Window Setting, Select Apps



Step 2 : Select the Programs and Features

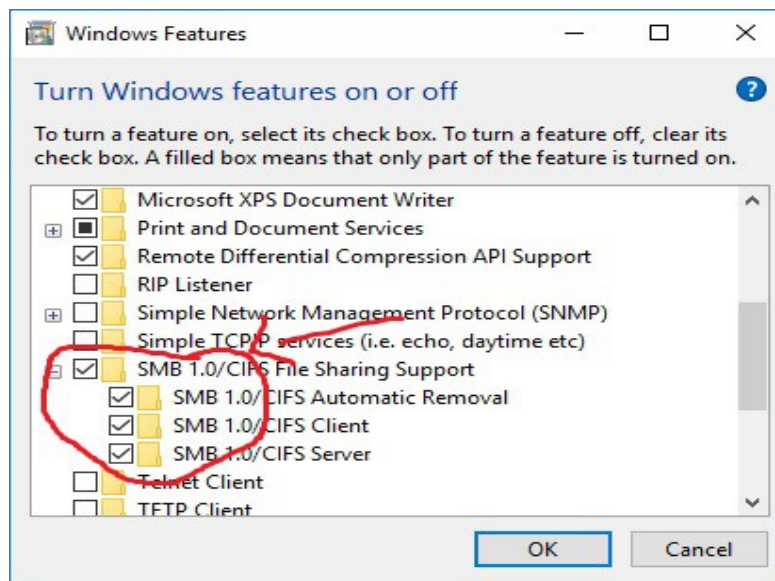


Step 3 : Select “Turn Windows features on or off”



Step 4 : Make sure you TICK the 4 options :

- SMB 1.0/CIFS File Sharing Support
- SMB 1.0/CIFS Automatic Removal
- SMB 1.0/CIFS Client
- SMB 1.0/CIFS Server



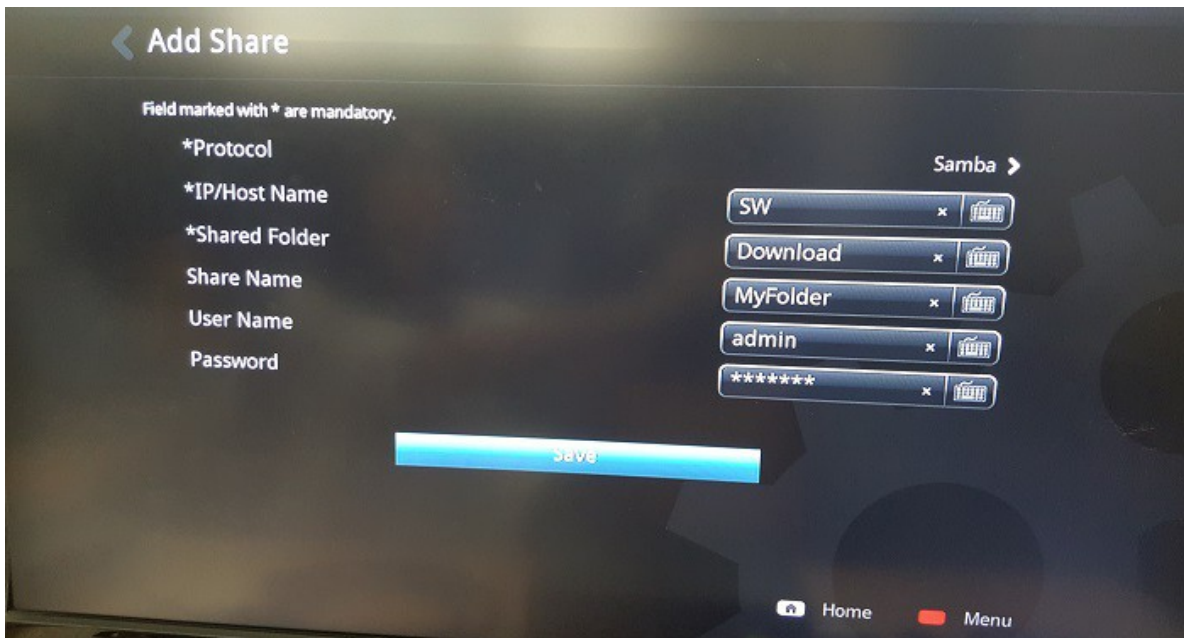
Step 5 :

- After you had done all the setting above, manually add a network share on your Window 10 PC to Popcorn Hour Media Player.
- Select Setup button from remote, select Network Share – Add Share.



Step 6 :

- At the Add Share page, enter the IP/Host Name, Shared Folder, Share Name, User Name and Password then Saved it.
- Note: For those Samba shared that without authentication, just leave it blank for User Name and Password.*



Step 7 :

- Go back to Media Player Home screen, select the Networked Media



Step 8 :

- The added network share will always appear at the top of your network devices list.

